



As the Wood Turns

The monthly newsletter of the Chicago Woodturners



23 Years of Art, Craft, Technology, and Tradition

In this Issue

- Beer Bowls, pg. 3
- Woodturning Workshop on TV, pg. 5
- In Memoriam: Jon Keith, pg. 7

Next Meeting
March 9, 2010

Friendship Village
Bridgewater Place
Building

Woodridge Room
350 Schaumburg Rd.
Schaumburg, IL
847-884-5000
7:00PM-10:00PM

Regular Features

- Curls from the President's Platter, pg. 2
- Committee Reports, pg. 3 & 7
- AAW News, pg. 4
- Calendar of Events, pg. 6
- Meeting Minutes, pg. 7
- Member's Gallery, pg. 8 & 9
- For Sale, pg. 10
- Symposium Updates, pg. 11 & 12

CWT Meeting at New Location March 9

At the CWT Meeting on February 16, it was announced that our club will now hold our meetings at Friendship Village in Schaumburg. The next meeting will be held on March 9, at 7:00 PM. This is the 2nd Tuesday of March. Future meetings will also be held on the 2nd Tuesday of each month. Doors open at 6:30. The address is 350 West Schaumburg Road, Schaumburg, IL 60194. Friendship Village is located just west of Roselle Road on the north side of Schaumburg Rd. There is a stop light at the intersection. Their phone number is 847-884-5000. Visit their website friendshipvillage.com for some of the amenities available.



We will be meeting in the Woodridge Room each month. This is a beautiful room, with no stairs to negotiate, sparkling clean restrooms, and, unlike the Woodcraft basement, real climate control! There is even a sandwich shop open till 7:00PM. Friendship Village is a retirement center, and they are very pleased to have us hold our meetings with them. We look forward to a long relationship with Friendship Village, and are certain that all of you will find the facility to be first-rate for our club. See pg. 4 for a map to the facility.

It is suggested that we car pool as much as possible. While adequate, parking may be a little tight. It's good for Mother Earth to share a ride, anyway. If you have any questions or need directions to Friendship Village, contact any of your CWT Board Members. We hope to see all of you there on March 9th.

Al Miotke Demonstration at the March CWT Meeting

Paul Shotola



At our next meeting, Al Miotke will present techniques and design considerations to get you started in segmented construction. Al's segmented work is among the best around, both in construction and design. If you've been baffled with segmented work, here's your opportunity to get a good grounding in this flexible and creative technique.





Phil Brooks

Woodcraft's new location

Green Tree Plaza, 1177 S. Milwaukee Ave. Libertyville, IL. North of Rt. 60, South of Rt. 176. The Palatine store closes at 3:30 pm on March 6. The new location in Libertyville opens on March 10. Woodcraft will continue their woodworking and turning classes at the new store. Visit their website for the latest schedule.

Curls from the President's Platter

Phil Brooks

Those of you who attended our last club meeting know that the Chicago Woodturners have unanimously voted to change our meeting place to Friendship Village, starting on March 9th. We will be meeting in the Woodridge Room, the same date (2nd Tuesday of the month) and the same time (7:00pm – 9:30pm). This change was driven by the fact that Woodcraft was moving their store to Libertyville.

For those of you who couldn't attend last month's meeting, let me summarize this discussion. A PowerPoint presentation was given on the search committee's activities to find a new venue. It covered the various types of facilities considered, as well as the criteria for evaluating the sites. These criteria included: it must be affordable (without raising dues), relatively close to our present location, room for 90 people, lathe, tables, A/V, etc., ability to have monthly demonstrations and raffles, accessible to major highways and adequate parking, the ability to have Saturday demonstrations and a location that was relatively long term.

The facilities we looked at were vacant commercial properties, warehouse condos, high schools, community colleges, various halls (such as the American Legion), park districts and senior centers. We quickly eliminated the commercial properties and warehouse condos due to their high cost. High schools and community colleges were expensive and didn't meet most of our other criteria. The search was then narrowed down to two viable sites: the Arlington Heights Senior Center and Friendship Village in Schaumburg. A comparison of these two facilities is given in the following table. As you can see from the table, Friendship Village was the obvious choice. The only downside to either of these two sites, or any of the others that were affordable, is that we can no longer offer hand-on classes. Perhaps we can find another site to have our hands-on classes at a later date.

Friendship Village	A. H. Senior Center
Can Have Mtg. Same Time, Same Date, Same Room	Restricted Time, Different Day, Likely Different Rooms
Can Have "All-Day" Demos	Can't Have "All-Day" Demos
Can Have Raffles	Can't Have Raffles
Have Some Storage, Less Hauling, Setup & Teardown	No Storage, More Hauling, Setup & Teardown
Separate Room for Demo & Photos/ Post Gallery Review	Most Likely a Single Room for Both
Support to FV Woodworkers in Building Greenhouse	1 - 2 Members per Week to Super-vise AHSC Woodshop
\$75 per Meeting for 2 Rooms	No Charge for Mtg. Room
Adequate Access & Parking	Adequate Access & Parking
No Way to Offer Hands-On Classes	No Way to Offer Hands-On Classes

Looking forward to seeing you at Friendship Village on March 9th.

Phil

Bob Haskins' Norwegian Beer Bowls

Paul Shotola



Many of us thought that Bob was pulling our collective legs when he announced at the February Gallery that these were "beer bowls." Most of us like our beer tall and frosty, and a bowl just doesn't seem right. It turns out that Bob's bowls do have a historical lineage.

Traditionally, beer or ale bowls were saved for special occasions: weddings, funerals and the like. At a funeral, a large ale bowl would rest on top of the casket, and friends and family would step forward, take a glass of ale and make a toast in remembrance. Remind me to put that in my will. It sounds like a good idea, especially for the guests.

Beer bowls were sometimes elaborately carved and fancifully shaped. Many were decorated with rosemaling, a flower painting style. One bowl I found on the internet carries the inscription: "*Drink the Beer before it's flat. Embrace the Girl before she sleeps.*" This is also a good idea, perhaps a motto to live by. Clever, those Norwegians.



Painted antique Ale Bowl with inscription



Norwegian-style beer bowls by Bob Haskins in Kauri Pine and Maple



Membership Updates

Al Miotke

We had 84 of our members in attendance at our February 16 meeting which had been re-scheduled due to the weather.

CWT Dues for 2010 \$25.00 for an individual membership \$35.00 for the whole family

This month our 2010 membership grew to 156. Welcome to our new member Martin Meyer from Chicago. Martin

has been turning for about 2 years. He also let us know that he has some nice freshly cut logs of Ambrosia maple, Osage orange and other woods available for a modest price. You can reach Marty at curlee11@aol.com.

Nick Agase from Lakemoor, who is new to turning, attended our meeting as a guest and we hope to see him join our ranks soon.

156
Members as of February.
Have you paid your 2010 dues?

On the Raffle Table

March Meeting

At the February meeting, we cleared out the "prize cabinet" in preparation for our move to Friendship Village. That doesn't mean that the table will be bare at the March meeting!

We will have a Oneway sharpening jig along with some fresh items on the table. The Raffle helps provide the funding for our monthly events, so make sure you buy your tickets and join in the fun.



Oneway Wolverine Sharpening Jig

2010 Guest Demonstrators



Dale Larson



Graham Priddle



Jason Swanson
Peppermill in
Wenge, Maple
and Paella

2010 Guest Demonstrators

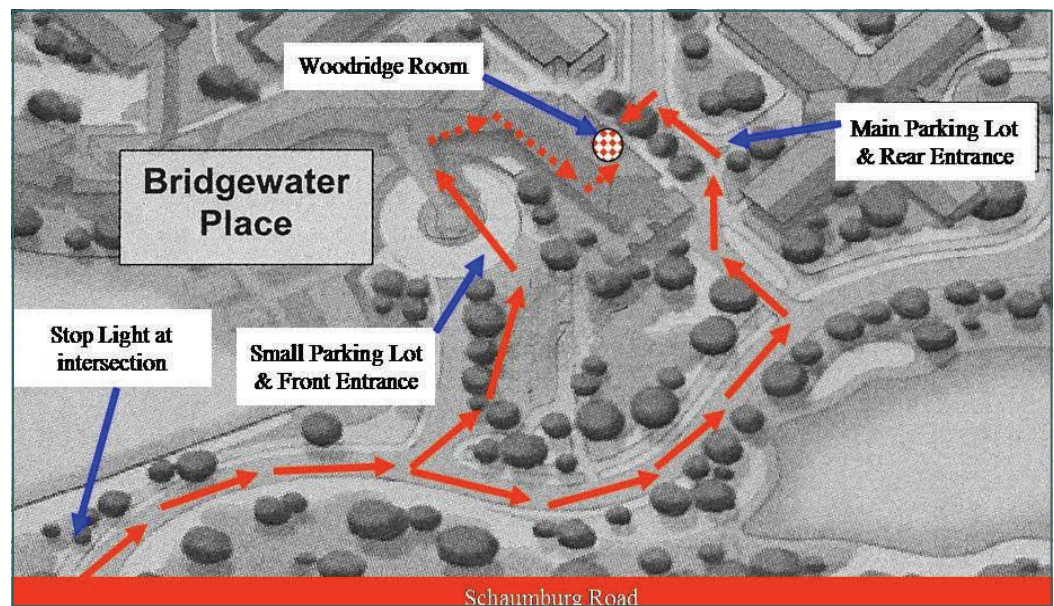
Paul Shotola

Guest demonstrations and hands-on classes are temporarily on hold. Note that I said temporarily. When the meeting location was discussed at the February meeting, many of you expressed concern about the Guest demonstrations and classes.

The CWT Board and Search Committee is actively looking for a location for hands-on classes. While the Friendship Village meeting room can (and probably will) be used for Guest Demos, classes must be held in a more shop-like location. We currently have a couple of possibilities, but final details need to be worked out.

Rest assured that Guest Demos and Classes will be resumed as soon as a suitable venue is arranged. These important activities and membership benefits will be back on the calendar as soon as possible.

Friendship Village Map



At the March meeting Jason Swanson will conduct the Gallery Review. Jason has been a CWT member since 2007. He demonstrates and teaches regularly at the Woodcraft store in New Berlin, WI (check the calendar for dates and topics), and is currently the President of the Milwaukee Area Woodturners.

AAW News and Updates

I wanted to make you aware of a few updates to AAW benefit information which were discussed in previous columns. First, a new page has been created on the AAW website, in the member's only section, that lists all the participating companies in the Vendor Discount Program. The list is increasing regularly and currently includes companies such as Bow River Specialty Woods, Exotic Woods, Anderson Ranch, Marc Adams School, and Anderson Ranch. All are offering discounts on their products or classes between 10% and 15%. Log in and learn more about what is available and to stay up to date with what is new.

The AAW has notified all Chapters of a clarification to the previous announced description of insurance benefits provided for all AAW members participating in AAW Chapter activities. The exact clarification provided by the AAW was: *"For a club to be qualified to be an AAW sanctioned chapter with the AAW furnishing the liability insurance for the chapter, all officers and directors of that chapter must be AAW members. Only AAW members will be insured under this policy for claims that may be brought against them for bodily injuries that they may have caused to another person while performing a chapter sanctioned activity."*

Al Miotke

Chapter members that are not AAW members who participate in chapter sanctioned activities are not insured for claims that may be brought against them."

Did you participate in the AAW member survey that was conducted last fall? The purpose of the survey was to provide the board with information from the membership about how the Association, its website, and newsletter are meeting the needs of the members. Well, the results of the survey are in and have been published for AAW members to view. Go to the member's page and log in to see what your fellow AAW members think about our association.



Visit the AAW website:
www.woodturner.org

Woodturning Workshop featuring Tim Yoder returns to TV for its fourth season. The new series starts this March. Check your local PBS channel for listings.



Chicago Woodturners Board of Directors and Committee Chairs 2009

President	Phil Brooks	847-548-6477	brookphil@sbcglobal.net	1052 Cheswick Dr	Gurnee, IL 60031
Vice President, Web Master	Scott Barrett	847-562-9121	dr@bdental.net	46 Bridlewood Lane	Northbrook, IL 60062
Secretary	Andy Kuby	847-317-1841	kubywinslow@comcast.net	2945 Cherokee Ln.	Riverwoods, IL 60015
Treasurer	Jan Shotola	847-412-9781	jshotola@yahoo.com	1865 Western Ave.	Northbrook, IL 60062
Past Pres., Newsletter Ed.	Paul Shotola	847-412-9781	p.shotola@comcast.net	1865 Western Ave.	Northbrook, IL 60062
Membership	Al Miotke	847-297-4877	alan.miotke@chamberlain.com	920 Sumac	Mount Prospect, IL 60056
Librarian	Clint Stevens	773-852-5023	clint.stevens@comcast.net	1635 S. Chesterfield	Arlington Hts., IL 60005
Raffle	Chuck Svazas	708-482-3866	csvazas@sbcglobal.net	707 Bransdale Rd	LaGrange Park, IL 60526
Tools & Equipment	Don McCloskey	847-420-6978	mccloskey@ameritech.net	2028 Gilboa Ave.	Zion, IL 60099
Demonstrations	Binh Pho	630-365-5462	toriale@msn.com	48W175 Pine Tree Tr.	Maple Park, IL 60151
Set-up / Clean-up	Bill Robb	847-931-1876	akmtns1@comcast.net	46 Lone Dr. Unit C	South Elgin, IL 60177
Audio & Video	Lee Svec	847-331-0715	svec@att.net	661A Fieldcrest Dr.	South Elgin, IL 60177
Ornamental Turning SIG	Bill Hochmuth	630-620-8566	wfhochmuth@comcast.net	2S725 Parkview Dr.	Glen Ellyn, IL 60137

Attention artists, teachers and demonstrators
 If you are participating in a craft show, have a gallery exhibition, will be teaching or demonstrating your craft, or know of an event of interest to woodturners, please contact the Editor to add the event to the calendar. A little self-promotion is a good thing. Your fellow woodturners want to know about your events.



Calendar of Events

Paul Shotola

Classes at Woodcraft, Woodridge

Pen Turning with Don McCloskey, March 27
 Turning Peppermills with Carole Floate, March 28
 Pen Turning with Don McCloskey, April 10
 Turning Spindles and Drawer Pulls, April 17
 Custom Pen Blanks with Don Washow, April 18
 Turning 101 with Carole Floate, June 12-14
 Turning 102 (Bowl Turning) with Carole Floate, July 10-11
 Turning 101 with Carole Floate, August 7-8
 Turning 101 with Carole Floate, September 11-12
 Turning 102 (Bowl Turning) with Carole Floate, October 16-17
 Turning 101 with Carole Floate, November 6-7

Classes at Woodcraft, Libertyville

Turning 102 (Bowls) with Carole Floate, March 13-14
 Pen Turning 1 with Don McCloskey, March 20
 Turning 101 with Carole Floate, April 10-11
 Pen Turning 1 with Don McCloskey, April 24
 Turning 101 with Carole Floate, May 15-16

Classes at Woodcraft, Milwaukee (New location in New Berlin)

Pen Turning with Jason Swanson, March 7
 Intro to the Lathe with Hank Bardenhagen, March 20
 Tool Sharpening (wet & dry) with Jason Swanson, April 7
 Intro to the Lathe with Hank Bardenhagen, April 17
 Pen Turning with Melanie Wegner, April 25
 Segmented Peppermill with Jason Swanson, May 16 & May 23
 Turn a Natural Edge Bowl with Hank Bardenhagen, May 20
 Intro to the Lathe with Hank Bardenhagen, May 22
 Finishing Turned Projects with Jason Swanson, May 24

Utah Turning Symposium, May 6-8, Orem, UT

www.utahwoodturning.com

24th Annual AAW Symposium, June 18-20, Hartford, CT

www.woodturner.org

Turn-On! Chicago 2010, August 20-22, Mundelein, IL

www.turnonchicago.com

To add events to the calendar, contact Paul Shotola
 847-412-9781 p.shotola@comcast.net

February 2010 Meeting Minutes

Carole Floate

Commenced: 7:00pm**Adjourned: 9:35pm****Opening Remarks:**

Phil Brooks presented a Power Point presentation on finding a new meeting place for the CWT club. The site selected was Friendship Village in Schaumburg, IL. The facility will allow us to have our meeting and demonstrations there. A motion to go with the site was made by Roger Shackelford and seconded by Paul Shotola.

Moving Day:

The moving days for CWT are Saturday, February 20th starting at 3pm until 6pm and Sunday, February 21st starting at 9:30am. Volunteers were asked to help with the move. All members needed to take their chairs home with them this evening. Storage of our equipment will be in Ron Zimmerman's garage in Barrington. Dick Stone has made arrangements for our collaborative projects to be displayed in the Raupp Museum in Buffalo Grove. We now have a complete inventory of our woodturning tools, equipment, audio/video and library. Jan Shotola is looking into insurance for our assets. Clint Stevens reported that a lot of library materials were returned. He also got a lot of emails from members saying that they had some pieces to return.

In Memoriam: Jon Keith 1942-2010

Jon Keith, a CWT member since December of 2001, has passed away. He had been fighting cancer for nearly two years, but succumbed to a sudden bout of pneumonia.

Always ready to volunteer, help a new turner and share his wealth of technical information, Jon was a great asset to the club and the woodturning world.

Services are Tuesday, March 2 at Kolssak Funeral Home in Wheeling. Visitation is 3pm-7pm, with a service at 7pm.

Rockler Demonstration:

Sorby is giving demonstrations at Rockler on Tuesday, Feb 23rd from 10am – 1pm and 2pm – 5pm. All Sorby tools will have a 25% discount.

Membership Report – Al Miotke:

Membership for 2010 is at 136. There was one guest and one new member.

Treasurer's Report – Jan Shotola:

At this time there were 70 registration forms for TOC. About half were from our club. The other half are from Windy City club and other areas as far away as Washington State.

Raffle – Chuck Svazas:

Scott Barrett handled the raffle, as Chuck Svazas was on vacation.

February Demonstration:

Al Miotke postponed his demonstration on segmented turnings until the March meeting.

Other:

Carole Floate asked for volunteers to help turn 250 3" discs for the hands-on session at the TOC 2010 symposium.

Gallery Review:

Alan Carter honored us with the critique of our instant gallery.

Cleanup: Bill Robb and volunteers.
Respectfully submitted,

Moving Day was February 21.

The basement at Woodcraft is now looking pretty barren and empty. Thanks to all of the folks who showed up early, stayed late, lifted heavy stuff, swept the floor, counted tables, loaded the truck, provided the truck (thanks to Frank Pagura, the wagon master!) and in general, worked like dogs to sort, box and tote all of the gear that your club has accumulated over the past 23 years. A special thank you goes to Ron Zimmerman, who graciously donated storage space. Without the guidance of the Master (with a capital M) Chief, Don McCloskey, all of our gear would probably still be in the basement. Thanks again to all for your help.

February Meeting

Member's Gallery

It's all in the details



Mark Johansen
Japanese Pine
Double Bowl



Marty Knapp
Osage Orange,
Leather Lacing



Bill Brown
Locust



Jim Wickersham
Staved Plywood



Scott Barrett
Ash, Ebony



Thomas Stegall
Walnut



Paul Shotola
Walnut

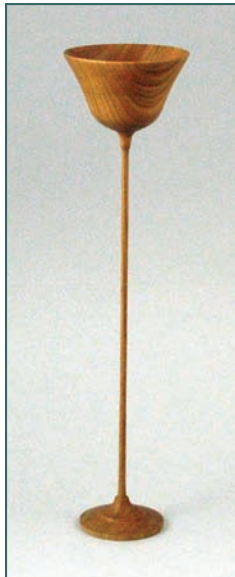


Paul Shotola
Maple, Mahogany

Member's Gallery



Julie Basrak
Cartridge Pen



Jim
Wickersham



Bil Brown
Walnut, Iron Stand



Roger Basrak
Walnut Burl



Marty Knapp
Mahogany

February Meeting



Larry Fabian
Maple, Stone Inlay



Marty Knapp
Mystery Wood, Leather



Bill Brown
Box Elder



Paul Shotola
Maple, Sapele

Editor's Choice



**Desaray
Shackleford**
Age 12
Corian Pen

CWT member Roger Shackleford has been introducing his young neighbors and relatives to woodturning. Roger tells me that the response has been overwhelming. The young people are anxious to learn, and respond well to a positive, creative activity.

Roger's granddaughter, Desaray, surprised Roger with a gift of a well-made pen. Age 12, she took the lessons learned and made this pen on her own. The young lady's skill at the lathe is evident and will only increase with time and practice.

To my mind, Roger's mentoring should be an inspiration to all of us to pass on the art and craft that we so much enjoy.

One of the perks of being the Editor is being able to editorialize. This is one of those times. You may agree or not, that's the beauty of free speech.



Monthly Meetings are held on the 2nd Tuesday of each month at Friendship Village 350 W. Schaumburg Road Schaumburg, IL 7:00-10:00 PM 847-884-5000 Join us in the Woodridge Room in the Bridgewater Place building. 7:00pm –10:00pm All are welcome.

Visit our website
chicagowoodturners.com

Membership in the Chicago Woodturners is available to anyone wishing to increase their turning skills through education, discussion and critique. Annual dues are \$25.00 for a single membership and \$35.00 for a family. Visit our website for an application or contact Al Miotke Membership Chairman

The Chicago Woodturners is a chapter of the American Association of Woodturners (AAW). Visit their website for more information.
www.woodturner.org

For Sale or Trade

Contact the Editor to post your items

Dave Forney has a number of items for sale. Contact him at 847-639-6429 or email dave_forney@hotmail.com
 Craftsman 10" Radial Arm Saw, model number 9-22038. New in the box, never opened. Paid \$650. Will sell for \$600.
 Delta Shop Mate 9" bandsaw, model BS 100 (bench top), tilting table New in the box, never opened. \$100 new. Will sell for \$80.
 Ryobi 16" wide belt sander, model WDS1600, sands stock from 1/8" to 3" thick. With stand and rolling base (locking casters). Lightly used, \$300 OBO.
 Solid core raised panel door slabs. 4 raised panels. 30" x 80" Primed. Slabs only; no latch, knob or hinges. pre-bored. \$20 each. I have 5.
 Leigh dove tail jig, new, never used. \$400 new. Will sell for \$300.
 Jet mini lathe bed extension, new: \$120 will sell for \$90.
 I'm also liquidating part of my turned wood collection. Contact Dave for details and pricing. Artists include: John Dickinson, Dick Coddling, Phillip Moulthrop, Mark Lindquist, Luc Gontard, Craig Richardson, Dennis Elliott, Mick O'Donnell, Merryll Saylen, Gene Reinking, Dewey Garrett, Al Stirt, Dan Kvitka, Art Liestman, Mike Scott, Michael Bauermeister, Don Derry, and others. I also have some glass pieces that I'm liquidating as well.

Ring Master #723, 1/2 HP, includes all manuals and instructional DVD, alignment guides, 4 cutter blades, plug cutter & bowl clamp. \$300. RTC 8 1/2 X 40 starter lathe, 8 speeds, \$65. Wilton 12" mini-lathe, 1/4HP, VS, all factory accessories included. \$125. Contact Roger Shackelford 847-836-0963

Vega D-36" Professional Lathe Duplicator: Used, good condition. List: \$948 Sell: \$570. Industrial Baldor Motor: New, 3HP, 3450RPM, Phase 1, 115/230V. List: \$1000 Sell: \$750 Dayton motors, Qty 5, new, from 1/4 – 1HP. Call for details. Ridgid Pipe Threader Model #400a on tripod , EC. \$90 OBO Carole Floate 847-295-2631 cfloate@yahoo.com

Extension bed and leg set for Jet 1642. Adds 57" to length. \$175. Dan Goulding 847-536-7817 jjdgou774@scbcglobal.net

Oneway 1224 Lathe w/ extension bed. 1 HP, VS, Reverse. Like new. Same model as the CWT Oneway. Located 8 miles north of Madison, WI. \$1800. Contact John Nicholson 608-850-5838, jcnicholson@tds.net

Items of interest to woodturners for sale, wanted, trade or free are welcome. Non-commercial ads only, please. To place an ad, contact Paul Shotola. 847-412-9781 or p.shotola@comcast.net



Salt & Peppermill Set by Jason Swanson.
Jason will conduct the Gallery Review at the March 9 meeting.

Turn-On! Chicago 2010

August 20-22, 2010

The Conference Center at the University of Saint Mary of the Lake, Mundelein IL

Turn-On! Chicago 2010 builds on the success of our 2008 Symposium, adding top-tier demonstrators, hands-on events and more activities for turners of all skill levels and interests.

Activities begin at 8:00 AM on Friday, August 20

Featured Demonstrators

Jimmy Clewes	Carole Floate	Binh Pho
Kirk DeHeer	Lyle Jamieson	Dick Sing
Don Derry	John Jordan	Malcolm Tibbetts
Cindy Drozda	David Nittmann	Don Ward

For 2010, the Symposium features more demonstrations (Nearly 50 rotations in 5 well-equipped classrooms) by the finest wood artists and demonstrators around. There will be demonstrations geared to every level and type of turning. From basic bowls to the most advanced carving and surface embellishment, there is something for everyone at Turn-On! Chicago 2010.

Symposium attendance fee is \$260.00 and includes all demonstrations, meals, trade show access, hands-on events and the Saturday Banquet and Auction. Even the parking is free! The Conference Center has all amenities on-site. Once you arrive, there is no need to leave the facility. On-site housing is available in the Residence Hall. Rooms are \$58 for single occupancy and \$96 for double occupancy.

2010 CWT Members receive a \$20.00 discount for early registration. Register for \$240 anytime through the March 9 meeting to receive your discount.

Visit the TOC website
www.turnonchicago.com
 for details and the latest updates. A printable registration form is available on the website



August 20-22, 2010
 Mundelein, IL

The March 9 meeting is your last chance to save \$20.00 on symposium registration. Your 2010 CWT membership must be current. Remember, attendance is limited to 250. As of this printing, over 85 registrations have been received. Over 50% of these are non-CWT members. This is not the time to wait, as seats are selling quickly. Ensure your spot at **TOC 2010** by registering today.

Questions about registration?
 Contact
 Jan Shotola
 847-412-9781
jshotola@yahoo.com



**August 20-22, 2010
Mundelein, IL**

Friday night is Hands-On night. Experience marbling, turn a pen or two, or just relax with your friends.

The Conference Center at the University of Saint Mary of the Lake is located on 900+ wooded acres in Mundelein, IL. Just a few minutes north into Lake County, USML is a secluded, quiet escape from the hustle of the city. Everything is provided on-site, including all meals, and even snacks. Once you arrive, you can leave your wallet in your pocket, as everything is included. Housing in the Residence Hall is available as well.

Turn-On! Chicago 2010

August 20-22, 2010

Each month we'll take a look at Demonstrators and Events at TOC 2010

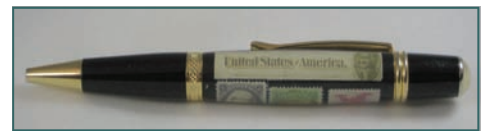
Don Ward, Wichita Falls, TX

A full-time pen turner, Don's pens are in demand with collectors around the world. He frequently teaches and demonstrates at national and regional symposia. At Turn-On! Chicago, Don will not only demonstrate, he will be leading a hands-on pen turning session on Friday evening. We'll have lathes set up and will provide all of



the tools and materials you'll need to turn a finished pen. The pens will be distributed to our troops both overseas and here in the states.

If you've never turned a pen before, this is a great opportunity to try something new. If you are an experienced pen maker, Don will help you take your work to the next level. Join us on Friday evening to make some shavings at the lathe, and help honor our troops. Don's website is www.redriverpens.com



Carole Floate, Lake Bluff, IL



Marbling is the ancient technique of applying color to wood and paper to echo the look of stone, specifically marble. Carole has perfected the technique, and now she's going to teach you the technique, and then it's your turn.



All materials are provided, and you'll take home a marbled piece to finish in your personal shop.

Carole will first demonstrate marbling, then on Friday evening, give you a hands-on lesson in the art. At the 2009 Ohio Valley Symposium, over 200 attendees got their hands wet at the marbling tanks. Join us for an opportunity to actually try out this fascinating and creative process. Visit Carol's website for more information: www.cfloate.com

