



**25 years of Art,
Craft, Technology,
and Tradition.**



The Monthly newsletter of the Chicago Woodturners

June 2012

May Demo—Surface Treatments by Rich Nye

Paul Rosen

Our demonstrator for the month of May was Rich Nye, who showed us how to use a Dremel tool to carve surface treatments on wood turnings. The Dremel tool is considered to be a “slow speed” device, with an rpm of about 35,000. High speed devices rotate a cutter at 50,000 rpm and higher. A pneumatically powered dental drill of the type used by Binh Pho for making piercings in turned pieces rotates the cutter at 400,000 rpm. Rich is no stranger to Dremel-like tools, as he has used them in his veterinary practice to help trim back the nails, beaks, and teeth of birds and other exotic pets. For wood turnings, he suggested a method for steadying the turned piece by placing it on two rice bags. Nye uses the Dremel tool with a foot pedal, to help regulate cutter rpm. He uses both hands to control the motion of the cutter, and he stressed that the fingers and hands perform all the motions, not the shoulders.

A broad spectrum of bits mounted on the 1/8" diameter Dremel collet is available. Almost all of the local big-box stores have a dedicated Dremel section. But the Dremel-branded bits tend to be

expensive. Fortunately, there are cost-effective alternatives available. Consider www.widgetsupply.com, the Woodcarvers Catalog, Inc. (for carbide gorilla burrs), or www.burrsforcarving.com. Nye recalled that Stephen Hatcher, who gave our club a demonstration on stone inlays in wood turnings in the year past, uses a Dremel tool to carve out shallow channels in the turning before colored stones are epoxied into place. Hatcher uses a special handle for the Dremel tool. The adaptation appears as a “handle with a hole” to help guide the cutter in making a pattern or drawing in the wood. Dremel also markets a proprietary holder, made of blue and gray plastic, which they call a “Multivise.” Nye showed us his own custom made adaptor that he uses to control the Dremel tool.

Among the examples displayed was a bowl covered with hemispherical concavities made with a spherical carving burr or ball burr. Nye also showed us a triangular-shaped cutter which

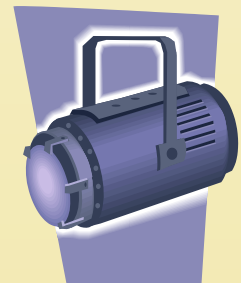
(Continued on page 3)

June Demo—Stroboscopes in Woodturning

In This Issue

March Demo Review	1,3
Curls from the President.	2
Club News	4
Meeting Minutes	5,6
AAW photos	7
TOC 2012	8,9
Gallery	10-12
For Sale	13
Calendar of Events	14

We have all heard of stroboscopes. Most of us remember them from our days with John Travolta in Disco Dancing. Did you know that they are also used in science labs, medicine, engineering, and woodturning... Really! Woodturning. Well at the June meeting Lars Sole will show us how to attach a strobe to a lathe to visually stop the spinning wood. Why you ask? Its cool!, better tool control!, special applications! Come to the June meeting and see for yourself.



Presidents Curls



President

Scott Barrett

**Turn-On!
Chicago 2012 is
only 2 months
away.**

**Thanks to all the
committee
chairs and other
volunteers that
are helping to
make this year's
symposium
another great
success.**

Memorial Day is a time to reflect on and honor the men and women that have given of themselves to protect the freedom we as Americans have enjoyed for many decades. It also is considered the "beginning of summer". This Memorial Day certainly provided us with summer like weather. This summer we are in the final sprint of our quest to show the region the power of organization, dedication, and participation. I am speaking of Turn-On! Chicago 2012. Under the guidance of our chair, Andy Kuby, the committee members have continued to make great strides to insure that no one in attendance will be disappointed. The program is very ambitious with topics that cover the gamut of woodturning. Jan Shotola has lined up an internationally acclaimed cast of demonstrators. Al Miotke has been busy promoting the event to surrounding clubs. Clint Stevens is involved with the folks at USML to insure that the facility is ready for our arrival on August 2nd for setup. Ian Kuhn our chief audio visual expert is responsible for the quality of experience when it come to the "close up view". Bill Robb has worked diligently to put together a quality group of room assistants to see that everything runs smoothly for more than 60 different demonstrations. Don McCloskey continues to search for and sign up vendors to insure that there is no shortage of merchandise to purchase and take home. Our Instant Gallery will once again be under the direction of Carole Floate. Carole has invaluable experience when it comes to displaying the beautiful turnings from demonstrators and attendees. A huge part of our symposium is the Saturday night Auction. Alan Carter has managed to secure over 40 donations to date with the promise of

many more by "Showtime". John Hill from North Carolina will be our auctioneer. You won't want to miss this event. John brings a level of excitement and enthusiasm to the evening that can only be described as "memorable".

As the registration chair I fully appreciate the more than 200 hours that Phil Brooks spent writing and testing the Access Database to track our registration process. Without this valuable tool, registration for an event of this magnitude would be nearly impossible. Roger and Julie Basrak have worked on the design of our symposium tee shirt. This year shirts are pre-purchased at the time of registration. A limited number will be available at the symposium. If you want one, be sure to purchase it in advance. Tom Waicekauskas is our official photographer. He and his group of volunteers do a terrific job of photographing the instant gallery and putting together the symposium DVD. On Sunday afternoon we would be lost without the efforts of Duane Painter and his crew. When we walk out the door on Sunday, we leave the facility in better condition than when we arrived. This is only possible because of people like Duane.

The list of volunteers is too numerous to cover here. Let me just say, an event like this depends on the entire membership for it to be a success. If you haven't found a way to participate, talk to one of the above mentioned individuals and get on their list. There can be no better feeling than the one that comes from contributing to make this a world class event.

May Demo—Surface Treatments

Paul Rosen

(Continued from page 1)

he uses to make slots or channels on a turning. For making deeper channels, Rich showed us a modified router base attachment. He uses this with a fan or vacuum to help clear the wood chips. Helpful suggestions for better technique were offered. You want to “feel” the cutter doing its work. Don’t over-torque. If you do shallow cuts, the burr will usually not burn the wood. But if you find that you do burn the wood, chances are you’re cutting too fast. Slow down. The wheel tool and the diamond wheel tool can cause burn marks. But you have the option to fill in the gaps with colored minerals, or disguise the burns with black paint. What if you go all the way through the turning? Consider using cyanoacrylate glue to seal the breach. In Nye’s experience, the cylindrical-shaped cutting tools from Kutzall give a relatively smooth surface.

Alternatives to the Dremel tool include the Arbortech slotting tool and the miniature chainsaw tool. You can also use a coarse carbide tipped donut tool to refine the outside surface of say, a teapot turning. Woodcarvers Magazine shows a selection of 1/4" bits that are available for surface treatments. There is also a “Radial Bristle Disk” that is just like a flat sander. It comes in a variety of grits. Woodcraft offers the Wecheer carving tool, which has adaptor collets that accept carving/texturing bits with 3/32," 1/8," and 1/4" diameter shafts. A full ecosystem of either rotary or reciprocating carving tools is available, with microcarving or engraving options. Corded and cordless versions of the tool are available.

Did you ever try to enter your name on Google, just to see what comes up? Probably you’ll get your local address and phone number, and maybe your membership in professional organizations if you’re a welder, an accountant, a pharmacist, a physician, a lawyer, or business person. And maybe you’ll find some other guy with your exact same name who is, for whatever reason, either famous or infamous. Try entering the name Richard Raymond Nye, DVM and see what you get. Born 1944. Graduated with a degree in Civil Engineering from the University of California at

Berkeley. Worked on the construction of the Sears Tower aka the Willis Tower in Chicago. Worked as a Commodities Trader at the Chicago Mercantile Exchange. Got a second degree in Veterinary Medicine from the University of Illinois in 1976. Became a charter member of the Association of Avian Veterinarians in 1980 and served as past president of organization (1989). Founded Midwest Bird and Exotic Animal Hospital in Westchester, IL (1985). Has authored several chapters for textbooks on avian veterinary medicine. For most of us, this would be a full life.

But there’s one more thing. Nye was drafted as a left-handed pitcher for the Chicago Cubs in 1966 and played on the Leo Durocher-led Cubs in 1969. He was named Chicago Rookie of the Year in 1968, and eventually pitched for the St. Louis Cardinals and Montreal Expos until injuries forced him to retire after his final game on September 2, 1970. Oh, and did I mention? He’s a woodturner, too.

Our First Saturday Mentoring Session

Our education committee has held its first Saturday morning mentoring session and you had the choice of two locations, the impressive studio of Darrell Radar in Woodstock or Clint Stevens in Chicago. Everyone had a great time and learned a little more about the fundamentals of woodturning. Thanks to Darrell and Clint for volunteering their time and opening up their facilities to the Chicago Woodturners. Its this kind of generosity and willingness to share skill that makes our chapter go great. Thanks to Thomas Stegal and the Basraks for helping at the sessions.



June Mentoring Session

Darrell Radar

Sharpening problems? Don't know where to start? How can I get "the" grind? Why does it get blue? What am I doing wrong?

These questions and others can be answered at the next Mentoring Time prior to our June 12th CWT meeting. From 6:00 to 6:55 pm we will do our best to help you get a sharp edge on your tools. One question and 30 seconds of observing can make a major difference in your results. We'll have the mini-lathe set up so you can try your tool after sharpening. As we've said before, this could be the best spent hour of your month!

Your Education Committee is looking forward to helping you be a better turner. Please let us know what we can do to help you more. Our desire is to lower your frustration level, give you better results and have more fun.

2012 Meeting Agenda

Month	Gallery Review	Demonstration
January	Phil Brooks	Marty Knapp—Leather work on turning
February	Thomas Stegall	Andy Kuby—Galactic Arm Spirals
March	Jason Swanson	Ken Staggs—Spoon carved Goblets
April	Al Miotke	Larry Fabian—Coloring techniques
May	Presidents Challenge	Rich Nye—Carved Channels on turned vessels
June	Roger Basrak	Lars Sole—Using a Stroboscope in woodturning
July	TBD	Donn Hamm—Stunning Hollow Ornaments
August	TBD	Bob Lenard and Phil Brooks—Making a great vacuum chuck system for \$75
September	TBD	Thomas Stegall—Thin wall turning
October	TBD	
November	TBD	TBD
December	none	Holiday Party

April Meeting Minutes

Thomas Stegall

Members!

Don't forget your nametag. It's worth one raffle ticket for BIG prizes.

Don't forget to arrive at 6:10PM for the April 10 meeting to participate in the mentoring program. The May topic is Bowl Turning.

Thanks to Mark Hibner and the students of Palatine High for donating Pens for Troops



Don't Forget your Raffle Tickets at the next meeting.

\$1 Each
6 for \$5



The Education Committee held a mentoring session on bowl turning which resulted in an attendance of about 20 members and guests.

Scott called the meeting to order at 7:00 p.m.

Mark Hibner (instructor) and student David Grajdura gave thanks to Roger Basarak for coming to teach the Palantine High School some woodturning skills. Mark and David presented 34 pens made by students to be donated to the "Pens For Troops" The donated pens were passed along to Don McCloskey and represent the first completed pens for our goal of 900+ donated pens. It's a big goal, but together we can achieve it. Contact Don McCloskey by phone if you would like to get some pen kits and contribute to this worthy cause. Your participation is needed and greatly appreciated.



Don let us know that the donated pens need to be completed by November 11th. Currently a little over 1000 pen kits will be provided for members to turn. The Oakton Community College charity event "Empty Bowls For Food"

will be held the first Saturday in December.

Mark Dryer reminded us that the new CWT website is up and running and the "members" area password is case sensitive. The Turn-On-Chicago website is up, will provide updates of information on demonstrators and donated auction items.

Scott announced that Bob Schultz has graciously relieved Clint Stevens from the club librarian responsibilities. Tremendous thanks to Clint for his shouldering this responsibility for the past two years.

Roger and Julie Basarak announced that that we currently have 148 paid members, one new member Jerry Kuffel and guests Bob Bruss, Don Steklac, and Curt Downing.

Andy Kuby announced an anonymous benefactor will be providing half of the cost of a TOC registration that will be raffled off for a member who brings a paying guest to TOC. Paul Shotola will be having a "garage sale" with the date and other information to come. Andy provided the membership with a treasurer's report.

Alan Carter (Chairman of the TOC Auction) thanked those that have thus far donated tools and turned pieces to the TOC auction. More donations are needed.

Thomas Stegall announced that due to the overwhelming response to mentoring sessions, the Education Committee has planned a half-day session to be held this Saturday at Darrell Radar's place 10703 Allen Dale Rd., just outside of Woodstock IL. A

April 2011 Meeting Minutes**Tom Stegall***(Continued from page 5)*

second simultaneous session will be at Clint Steven's wood studio at 6224 N. Broadway, Chicago IL. Each location will have two or more instructors and will provide hands-on instruction free of charge to anyone interested. The Education Committee intends on holding more half-day mentoring sessions on Saturdays following the monthly meetings, likely to be every other or once every three months. Attempts will be made to add other locations in the future.

Bihn Pho as our local AAW executive board member answered questions about the AAW and the up coming San Jose Symposium. Bihn reminded us that 3 openings remain for those who would like free registration to the symposium simply by helping as a videographer for the demonstrations.

Phil performed the gallery review completing the Past President's Challenge. Phil challenged members to bring in a piece where a "design opportunity" occurred



in which a mistake forced you to change your design intent to complete the piece. Phil had each contributor explain the story/mistake/process that resulted in the finished work. Some excellent pieces were shown with little if any indication that a mistake had been made.



Richard Nye provided the club with an engaging demonstration of the vast ways in which carving can add a new dimension to your turnings or help you recover from a "design opportunity."

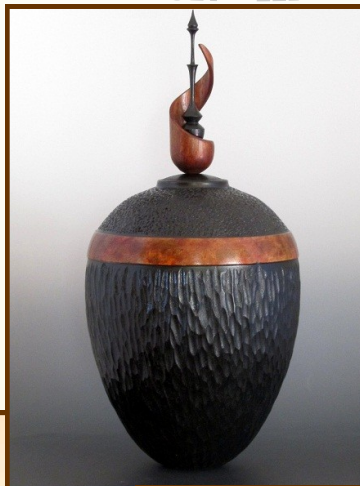
Turn-On!-Chicago
scheduled for
August 3-5, 2012.
Space is still
available



AAW "Photo's of the Week" in May



Week of May 1
Japanese Plum
Kauri



Week of May 14
Walnut



Week of Nat 8
Spalted Maple, Holly



Week of May 21
Spalted Elm

Chicago Woodturners Board of Directors and Committee Chairs 2011

President, Web Master	Scott Barrett	847-562-9121	dr@bdental.net	46 Bridlewood Lane	Northbrook, IL 60062
Vice President,	Clint Stevens	773-852-5023	clint.stevens@comcast.net	1635 S. Chesterfield	Arlington Hts., IL 60005
Secretary	Thomas Stegall	309-635-1623	naturewhirled@gmail.com	8036 N Merrill St.	Niles, IL 60714
Treasurer	Jan Shohola	847-412-9781	jshotola@yahoo.com	1865 Western Ave.	Northbrook, IL 60062
Past President	Phil Brooks	847-400-4539	brookspphil@sbcglobal.net	1052 Cheswick Dr	Gurnee, IL 60031
Newsletter Editor	Al Miotke	847-297-4877	alan.miotke@chamberlain.com	920 Sumac Lane	Mt. Prospect, IL 60056
Membership	Julie Basrak	847-358-2708	cwtjulie@hotmail.com	563 West Ruhl Road	Palatine, IL 60074
Librarian	Clint Stevens	773-852-5023	clint.stevens@comcast.net	1635 S. Chesterfield	Arlington Hts., IL 60005
Raffle	Chuck Svazas	708-482-3866	csvazas@sbcglobal.net	707 Bransdale Rd	LaGrange Park, IL 60526
Tools & Equipment	Don McCloskey	847-420-6978	mccloskey@ameritech.net	2028 Gilboa Ave.	Zion, IL 60099
Set-up / Clean-up	Duane Painter	224-643-7696	duane.painter@comcast.net	25680 Lehmann blvd	Lake Villa, IL 60046
Audio & Video	Ian Kuhn	312-213-3772	ian@dmdbroad.org	1510 Dale Dr.	Elgin, IL 60120
Educational Committee	Darrell Radar	815-648-2197	drader@clear.net	10703 Allendale Rd.,	Woodstock, IL 60098
Demonstrations	Rich Nye	630-406-1855	nyewoodturning@earthlink.net	40W257 Seavey Road	Batavia, IL 60510



On April 28th, English turner Ray Key brought his considerable talents to the Chicago Woodturners for a day of unforgettable demonstration. "Considerable

talent" is an understatement. Ray has written, educated and been represented in hundreds of expositions around the world. Yes, hundreds.

Ray split the day in two parts, the morning making platters and the afternoon with a variety of boxes.

Ray's platters are deceptively simple and expertly executed. His demo platter was turned with seven (my loose count) different rims. No sooner was one rim finished than another cut. The rims are where Ray's platters separate themselves from the pack. To understand the intellect that produces such rims, you must understand Ray's philosophy on rims. Many of his platters have a slight undercut beneath the inner edge. This allows an interplay between the light and platter as the light source and intensity change in a room during the day. The result is a platter that appears differently throughout the day. These rims mostly incline in to draw attention to the center of the platter, but they are never flat, never boring.

The afternoon was devoted to a variety of box styles. Regardless of the style, Ray follows some basic concepts for box making. Boxes follow a loose rule of proportions. Either the standard golden ratio, or the 60-40 split for the base and lid. Ray is relaxed enough to know that if it looks right, it is right. Perhaps that's the comfort a turner picks up from making thousands of boxes over a forty year career.

The simple Ray Key box may be straightforward, but the precision and design are beyond reproach. While I won't recount the entire method in this short article, Ray's methods are very common. Perhaps they are so common because so many

turners learned to make boxes from him. A couple of interesting method variations, Ray uses a cutaway scraper which features a circular tip for reaching difficult areas under the box lip. When sanding, Ray prefers to sand with a small amount of wax (prefers Mylands Wax Polish.) His tool control is such that he begins sanding at about 150 grit and continues through 400 grit.

A distinctive feature of a simple Ray Key box is a very small rabbet on the base of the box at the joint between the lid and base. This rabbet helps define the box and hide the small grain discordance between the top and bottom sections.

A variation of the simple box is the capsule box which does simulate the shape of a pharmaceutical capsule. A deceptively simple shape, which is difficult to master.

Ray also demonstrated a clamshell box. This one is a faceplate turning where the grain direction is perpendicular to the axis of the lathe. Normally wood movement would be too great to allow for a good fit. Ray compensates for this partially by selecting a dense wood for the box. The ones ray showed were cocobolo. Note that the method of sanding with a bit of wax minimizes dust from even tropical woods. Essential since dust is a significant health hazard for turners. The clamshell box also differs from the simple box because the tenon is in the lid rather than the base.

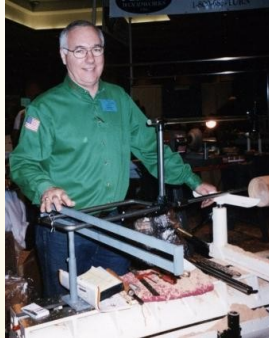
Asian influenced boxes a special case. They have a uniform concave curve that cuts through a lid with four corners. These boxes usually feature woods of contrasting color. The lids have either a simple plug to fit the base, or a more complex circular tenon. In either case, the results would be right at home in a rice farmers simple home or a royal place.

CWT has been extraordinarily fortunate in the quality of visiting demonstrators and Ray Key is no exception. Ray is a true woodturning ambassador, emphasizing simple forms and flawless techniques. We are sure to have our turnings influenced by what we learned.

Turn On! - Chicago 2012 Demonstrator Showcase

By: Paul Shotola

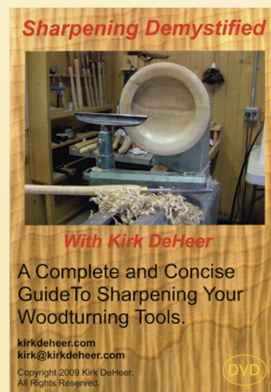
Lyle Jamieson



What is the difference between a beginning turner and an advanced turner? It is what they do with the basics. At TOC 2012, you can learn from one of the most organized and dedicated Instructors in the art and craft of Turning of our generation. Lyle teaches the basics, yes, but those principles apply to the more experienced turner as well.

From Traverse City, MI (beautiful *this* time of year) Lyle is one of the undisputed experts of the captured boring bar with laser guidance. He will explain and demonstrate the use of this tool that may seem (to old-time purists -that is: turners with steam-driven lathes) like cheating. It's so easy. Jamieson knows not only the basics, but the more advanced subtleties as well, and can explain them in well thought-out, easy-to-understand terms and techniques. His sculptures never fail to grab the attention of Collectors, Artists and Woodturners the world over. You can also meet Lyle and ask him your questions in the Trade Show at TOC 2012.

Kirk DeHeer



A skilled demonstrator and educator, Kirk has toured with the Woodworking Shows, demonstrated at numerous symposia and teaches regularly at Craft Supplies in Utah. His recent DVD, "Sharpening Demystified," is a guide to one of the most important areas of turning. Kirk will "demystify" the sharpening process for us. This is an essential skill in turning, as the more advanced turners can tell you.

Kirk will demonstrate and talk about Sharpening with and without jigs, as well as teaching the more advanced techniques that we all want and need to learn. You can also visit with Kirk in the Craft Supplies booth in the Trade Show at TOC 2012.

Turn On! - Chicago 2012 Demonstrator Showcase

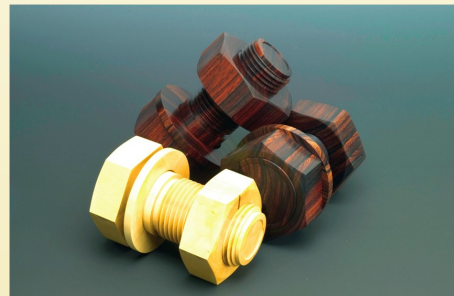
By: Paul Shotola

Johannes Michelsen



The “Hat Man” will be at Turn-On-Chicago again this year. **Johannes** (You ask *him* how it’s pronounced) will be a TOC as a Demonstrator as well as a Trade Show Exhibitor. Johannes will be turning not one but two mini hats using the same methods and technique used on his full-sized, wearable hats and explaining how they are bent to final shape as they dry.

Stuart Batty

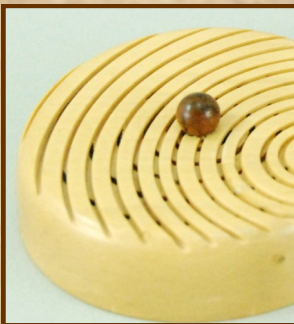


The son of another famous teacher and turning demonstrator, Alan Batty, Stuart grew up around turning. He, in fact, worked for his famous father, and learned wood turning the classical way, as his Dad’s apprentice. Stuart is no stranger to new methods and techniques, however. He has championed the negative rake scraper (along with Bonnie Klein) for use on hard exotic wood. When he was a mere 19 years old, he went to work for Craft Supplies, UK as an in-house teacher and demonstrator. We’re very pleased to have Stuart in Chicago (it’s been a long time) again.

A lot of Stuart’s work involves platters with integral bowls. He doesn’t turn at 3800 RPM, however, like his fellow Brit Jimmy Clewes. Employing a more leisurely speed (!), success depends on proper presentation of the tool, followed with a “no-sand” finish.

Recently Stuart has become involved with SB Tools, featuring an innovative line of turning tools, sharpening systems and other woodturning accessories, using his 27 years of experience at the lathe to inspire and guide him. He has demonstrated for over 180 turning clubs, and we look forward to his presence at Turn-On-Chicago 2012.

In the Details



Member's Gallery



Alice Call



Darrell Radar



Phil Brooks

May Meeting



Thomas Stegall



Rich Nye

Member's Gallery



Al Miotke



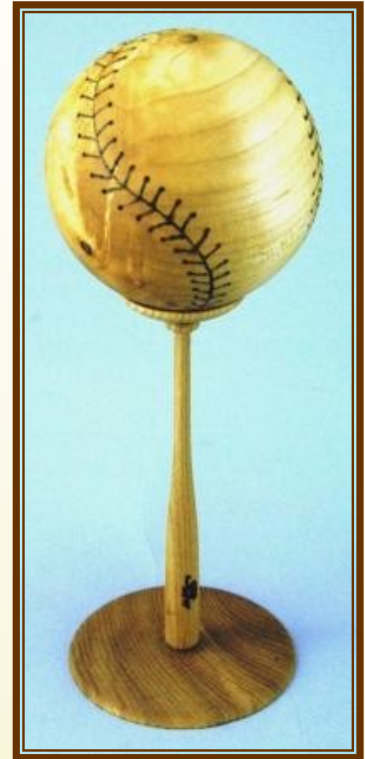
Paul Pyrcik



Francisco Bauer



MayMeeting



Ken staggs



Ken Staggs

Rich Nye
Original goal and modified design

Member's Gallery



Mark McLceary



Marty Knapp

Donn Hamm



May Meeting

Editor's Choice



Bill Brown



Larry Fabian



Lars Sole

Editor's Choice

I thought that the May Presidents challenge was a lot of fun and it was fascinating to see the creative techniques members used to repair and mask a mistake. Bill's piece may not be the prettiest but it was definitely a creative way to re-purpose a piece. It brought a few laughs to the group but in the end Bill has an effective low cost dust collector vent.

I'll make my personal selection each month. You might agree or not, it's a democracy, but I'm the Editor.

Member's Gallery

May Meeting



Donn Hamm



Dick Sing



Don Hamm



Dick Sing



Rich Fitch



Marty Knapp

Member's Gallery



Larry Fabian

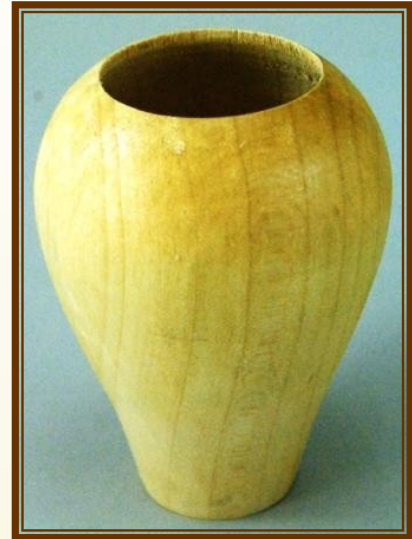


Scott Barrett



Tom Eovaldi
Maple

May Meeting



Tom Waicekauskas



Phil Brooks



Phil Brooks



Paul Rosen



Joe O'Malley



Max
Schoenberger

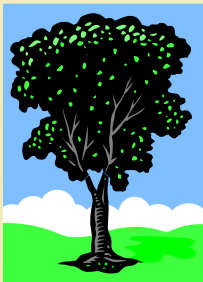
For Sale, Trade, or Wanted

Contact the Editor to post your items

Metal Lathe for Sale. New was \$1500.00 - Would like to get \$750.00 for it. Cabinet needs some paint. Contact Greg Karr GMKarr431@aol.com, 630-513-1681



I have a large number of wood shop tools for sale. I have setup a webpage. Please visit for more detail info. <http://rockcreekgardens.com> Emil Bohach 18097 Covell Rd Morrison, IL 61270 815-441-9658.



Want some fresh walnut? David Bergquist, the Security Coordinator and our contact at Christian Liberty Academy, has a walnut tree he wants to have taken down in return we can have all of the wood. David lives in Harvard and says that the tree is about 12" in diameter. For more information contact David by email at davidbergquist@sbcglobal.net

Items of interest to woodturners for sale, wanted, trade or free are welcome.
Non-commercial ads only, please. To place an ad, contact Al Miotke.
847-297-4877 or alan.miotke@chamberlain.com



Monthly Meetings
are held on the 2nd
Tuesday of each
month at:

**Christian Liberty
Academy**
502 W Euclid Ave
Arlington Heights,
IL
7:00-10:00 PM

Please join us
All are welcome.

Visit our website
chicagowoodturners.com

**Membership in the
Chicago Woodturners**
is available to anyone
wishing to increase
their turning skills
through education,
discussion and
critique. Annual dues
are \$25.00 for a single
membership and
\$35.00 for a family.
Visit our website for
an application or
contact:

Julie Basrak
**Membership
Chairman**

The Chicago Woodturners is
a chapter of the American
Association of Woodturners
(AAW). Visit their website for
more information.
www.woodturner.org

**Attention
artists,
teachers and
demonstrators**

If you are participating in a craft show, have a gallery exhibition, will be teaching or demonstrating your craft, or know of an event of interest to woodturners, please contact the Editor to add the event to the calendar.

A little self-promotion is a good thing. Your fellow woodturners want to know about your events.

For Sale, Trade, or Wanted

Symposiums

AAW 2012 symposium June 8-10, San Jose, CA

Turn-on!-Chicago Symposium August 3-5, 2012. The Convention Center of The University of St. Mary of the Lake, Mundelein, IL

3rd Segmenting Symposium, Lake Tahoe, CA Oct 18-21, 2012

To add events to the calendar, contact Al Miotke at 847-297-4877 or alan.miotke@chamberlain.com