



28 years of Art,
Craft, Technology,
and Tradition.



The Monthly newsletter of the Chicago Woodturners

July 2014

4th of July

Headline News

Turn-On! Chicago 2014

Turn-On! Chicago 2014 symposium registrations are coming in fast. There are a limited number of places so get your reservation in now. Visit www.turnonchicago.com for full details and to register on line. Each month we will have some of the demonstrators scheduled for this year's symposium. See page 8 for this month's profile.

Glenn Lucas to Demo in October

Glenn Lucas will be here October 4-7. He is a very popular demonstrator and seats are going fast. Sign up at the next meeting to reserve your place. The education committee provides one free demo a year and this is it. You must register but the event is free to CWT members whose dues are current. As always the Saturday demo session will start at 9:00 am and end at 4:30 pm. The cost is \$30 to non-members. Hands-On classes are limited to six people and are \$120.00 per day. One day classes are held on Sunday and two day classes are held on Monday and Tuesday. See page 12 for details.

2014 Dues

If you have not done so already, it's now time to renew your membership. \$25 for an individual, \$35 for the family. Best deal in the Metro area.



I WANT YOU TO ATTEND TURN-ON! CHICAGO

Presidents Curls



**President
Al Miotke**

Have you
considering joining
AAW? The
benefits far
exceed the modest
cost

Two weeks ago, from June 13th thru 15th, the AAW held its 28th annual symposium in the sunny but toasty city of Phoenix at the convention center in the heart of downtown. I have had the pleasure of attending four of these national symposiums and each one has been equably enjoyable. It's always fun to meet new turners from around the country and the world, see the latest offerings from vendors, and with over 1100 attendees, it hosts the largest collection of some of the most amazing turnings you will see in one location.

This year a meeting was held with over 120 officers in attendance from AAW Chapters around the country. It was an excellent meeting which focused on issues facing both chapters and the AAW. As you might expect, the needs of chapters vary quite a bit. A chapter in Alaska with 15 members compared the largest chapters of over 300 members have some different needs. But a few topics seemed to be a common theme, first, is the need to improve communications between the national AAW organization and the Chapters. Most AAW members and non-members are not aware of all the benefits offered by membership. It was also noted that quite often communications from the AAW do not get to all the members. Phil MacDonald, the AAW executive director and the board are committed to improving these situations. To review the issues and suggest possible solutions, a working committee of chapter leaders was formed earlier this year to make specific recommendations for the board to consider. This investigative phase is now complete and the board and committees are reviewing and prioritizing the suggestions. If you are an AAW member, I'm sure you have already seen an increase in Email communications from the national organization. I expect that you will see more improvements in the coming year, It was clear to me that this is large objective of the staff in Minneapolis.

Another initiative that the AAW is promoting are two new positions to be added by each chapter. A communications officer, to be the main interface with the AAW on communications impacting the chapter. Second is a safety officer who will promote safety practices by members and make sure club activities are following best practices. These seem like worthwhile initiatives and we should give this suggestion consideration.

If you were not able to attend, don't worry, you will be able to see many of the same world class turners this August at Turn-On! Chicago at much less cost. We have received quite a few new registrations but we still have not heard from many of you. Hopefully you are still considering signing up for the event. We are only about 6 weeks away from our flagship event.

Always remember to turn safe.

Alan J Miotke

June Meeting Minutes

Marie Anderson

President Al Miotke opened the meeting promptly at 7:00pm welcoming all to the meeting. Tonight's pre-meeting mentoring session was hosted by Clint Stevens between 6 – 7 this evening. Clint once again had a good group participating. Thanks Clint!

Turn on Chicago! 2014 is coming up fast. Al announced that the winner of the early registration drawing is Frank Pagura. Frank's prize is a new caliper. Al then stated that registrations for TOC are behind where we expected to be based on our last symposium. As of now, only 40 CWT members are signed up and Matt has registrations forms available tonight all who are interested are encouraged to sign up! The new CWT website has a direct link to the TOC 2014 website where the latest updated rotation schedule is available. Several interesting rotations include Binh Pho giving rotation on inspiration, Trent Bosch will show attendees his new sunburst platter, Rob Wallace will talk about the physics of woodturning and wood ID and Barry Gross on clear casting your own blanks.

Rich Nye, TOC Auction chairman made a request for donations for the auction. He is looking for your best work. These pieces will be auctioned off Saturday evening during the Turn On Chicago banquet. The funds raised go directly to the CWT educational fund. Easy Wood donated a \$125 tool and Robust donated a live center with the cones to go with it (\$125 value).

Tomorrow evening (June 11th) at 7pm there will be a TOC meeting . The symposium is getting close so this will be a very important meeting and all are welcome.

Lars Stole sent an email regarding making screens for our demo lathe here at CLA. Lars stated that there are plans for several different guards available and he suggested that he would be willing to make the shield. The material costs should be under \$500. Marie Anderson stated that we already have shields at NORMAC that should be at least looked at prior to spending money on this. There are at least 2 shields there that were made for use at SOFA. It was suggested that we should consider what we already have prior to making another shield. A motion was made to spend the funds, seconded and the vote passed. Al asked that Lars look into what was needed and that should include what is at NORMAC.

Al announced that although it is only June, October will be here before we know it which means that elections are just around the corner. The board positions that are up for election this year are Vice President and Treasurer. Al is being proactive and has asked both Don and Matt if they are going to be willing to run again and they have agreed which means we have at least one candidate for each position. If you or someone you know is interested in running, talk to any board member.

Scott Barrett has been working very hard on the new CWT website. At last month's meeting we discussed the option of password protection. Scott now has password protection set up. All you have to do is go to the website, put in your user name (email) and set up your own password. Scott will validate your user name within 48 hours and you will be able to access the login side of the website. It's simple. Visit the new CWT website today! Great job Scott! Thank you.

Al stated that we are still looking for a picnic coordinator for the Annual CWT picnic that Bob Leonard and Duane Painter have once again agreed to host. The job is not difficult because there are several years of notes available. Please contact Al to volunteer.

(Continued on page 11)

CWT News

Raffle

Mary Olsen and Chuck Svazas

June Raffle Winners

Dick Stone - Mahogany board
Roberto Ferrer - Bowl gouge
Francisco Bauer - Ash turning blanks
Mark McCleary - Cherry turning blank
Peter Paul - Wood crotch

Winning Ticket Numbers - Bring them back to the July meeting

698353

698440

June Raffle Receipts \$146.00

Membership report

Julie & Roger Basrak

There were 56 members present at our June meeting of Chicago Woodturners. That's just over one-third of our 151 paid members. We received dues for this year from Glenn McMurray. Thanks, Glenn! (And thanks to Marie for "delivering" Glenn's check.) Greg Fontana from Park Ridge, a recent guest, became a member at the meeting. Welcome to CWT, Greg. There was one guest, Ed Bouvier, from Wheaton. He attended with his friend (and CWT member), Timothy Olson. We hope to see you again, Ed.

To those members who have not yet paid, please bring your check to the July meeting OR send them to me at:

**Julie Basrak
563 W. Ruhl Rd.
Palatine, IL**

Checks should be made out to "Chicago Woodturners". Thanks for your cooperation!



Bowl by Dick Sing, one of the featured turners at Turn On! Chicago

Clint Stevens Demos Multi-Axis Turning

Paul Rosen

Editor's Note: Many thanks to Clint who stepped up with an hours notice to provide a very fine demo. Service above and beyond.

Our demonstrator for June was Clint Stevens, who provided us with helpful tips on eccentric turning. Clint had the good fortune to visit master wood turner Jean-Francois Escoulen at his studio in the south of France, where he spent a week for hands-on instruction. Long-time members of CWT may remember the visit Escoulen made to show us his techniques, down in the basement of the old Woodcraft store. Escoulen in his youth spent six years laboring as a production turner in his father's shop, starting at age 16. The repetition turned him into a competent turner, but he craved something beyond the monotony of standing eight hours a day turning nothing but stair balusters and newel posts. That led him to experiment with multi-center turnings, which blossomed into an entire career. Escoulen creates whimsical multi-axis characters that look "crooked, unequal, and non-symmetrical with a feeling of fragility and imbalance."

Another multi-axis turner of note is Mark Sfirri of Bucks County, PA. Mark's iconic multi-axis candlestick made the cover of *American Woodturner* back in 1986; it is a work of wood art that always provokes conversation and imitation. Mark also was a guest demonstrator at CWT in the basement of Woodcraft, but unfortunately, his presentation was poorly attended. I was one of the dozen or so in attendance; I thought his demo and hands-on were well worth the time invested. If multi-axis turning is your thing, consider signing-up for one of Mark's courses. Past CWT president Phil Brooks once brought in his version of the multi-axis candlestick for the critique table. The crowd was impressed.

The challenge with multi-axis turning is that when you start, you're mostly turning air. That's disrupting. It takes great concentration. And the tool is going to rattle in your hands from the intermittent percussion each time the piece makes a single rotation. So Clint advised us to use a 1/2-inch or 5/8-inch detail gouge (nothing smaller). Position the tool with the flutes vertical upon initial entry into the spinning blank. Clint demonstrated this by holding a white candle vertically, as he brought the flutes of the tool to contact the side of the candle. Then point the tool in the direction of the cut. For multi-axis turning, use a full-sized lathe, not a mini. Clint set his speed at about 1600 rpm. Several small cuts are better than one big one. He also showed us how the turning looks at speed. The inner portion looked like an elongated diamond, while the two ends were ghost images. Typically, you will turn the right half, and then the left half of the blank. And if you really want to pursue multi-axis turning, you might want to consider installing a strobe of the type Lars Stole demonstrated about a year ago. The strobe will "freeze" an apparent image of what you're turning, which could aid in proper tool positioning.



Jean-Francois Escoulen

(Continued on page 6)

Clint Stevens Demos Multi-Axis Turning

Paul Rosen

(Continued from page 5)

But first, you should place the blank on a table and mark a vertical line bisecting the center of each end. Then take an awl and make two marks on that line. Each mark should be about 3/8-inch from the edge of the blank. When you mount the piece between centers, use the diagonally opposite marks to make sure that the piece will be symmetrical as it rotates between centers. I'm guessing, but I'd say that blank was 3" x 3" x 8". Probably hard maple, or maybe cherry.

You generally start by turning the ends of the ghost images and move toward the center of the piece. As you take off more wood and move closer toward the center of the piece, the turning action becomes much smoother. But with your first attempt, you will likely be turning the lathe on and off frequently, just to see where you are in the process.

What about sanding? It's interesting because you must always sand the piece before you move to the next axis. And the sanding is different, in the sense that you may still be sanding some air, especially at the extreme ends of the turning. So concentration is required, more so than with a beautiful platter or bowl, where the sandpaper makes continuous contact with the rotating piece.

Another tip: make certain your tool rest is tightly clamped down when you do eccentric turning. That includes not only the clamp that tightens the banjo to the bed ways, but also the shaft of the tool rest. This is necessary because the jack-hammer like impact of the turning on the tool shaft will tend to make the tool rest move if it isn't sufficiently tight. I think that's what happened to Clint during his demo. Did you see the tool rest move slightly on the monitor? I thought I did.



Mark Sfirri

Time constraints prevented Clint from moving the piece to start cutting on the second axis, but again, one would mount the piece on diagonally opposite points on the vertical lines and start turning from the ends toward the center. And two axes is just for starters. Escoulen has some pieces that were turned on as many as seven different axes!

Clint gave us another helpful tip: buy the candle first. Why? Because candles come in different diameters, and it is easier to choose the right diameter drill bit if you know up front what the diameter of your candle will be. Candle bases are typically 14 mm to 1/2-inch in diameter. Clint recommends using a Forstner bit to make a hole slightly smaller than the outside diameter of the candle base; then use a scraper to taper the hole. Another tip: after you complete your first candlestick, make another one. People tend to want to use them in pairs, especially with an elongated, formal dining table.

I've done some eccentric turning. Because of the jack-hammer effect, it's not quite as much fun as turnings where the tool is in constant contact with the wood. But the reward comes in the end. People go ga-ga when they see the final result, especially if it's well executed. Is multi-axis turning going to be *your* thing? I guess we'll find out when we see what's on the critique table in July.



Coming In August - Turn On! Chicago

Paul Shotola

Do you want to get up close and personal with such acclaimed turners as Barry Gross, Trent Bosch, Lyle Jamieson, Nick Cook, Dick Sing, Binh Pho, Alan Carter and Jason Swanson? Then plan on attending Turn On! Chicago coming this August 15-17,

The symposium will again be held at the University of St. Mary's of the Lake, 1000 East Maple, Mundelein, Illinois.

Registration includes over 55 rotations (five at a time), all meals, Saturday night banquet with auction, the Friday night turning event, trade show, instant gallery and a commemorative tee-shirt. Most importantly you will have the chance to interact with some of the finest turners working in the United States. All this for the low price of \$295.00. Act now because the price goes up to \$330.00 on July 15.

Lodging is available on site in the campus dormitory. Registration and information is available at the event website: www.turnonchicago.com

A number of vendors will be available in the trade show including:

Bob Leonard - Vacuum Tools
Barry Gross - BG Art Forms
Steve Sinner - Advance Lathe Tools
Lyle Jamieson - Hollowing Tools
Vince Welch - Vince's Wooden Wonders (Sanding Supplies)
Jim Wesp - Kettle Moraine Lumber
Ed Brown - Exotic Blanks
Jason Swanson - Staved Construction
Robert Halverson

The Featured Demonstrators include:

Andi Wolfe - Botanist and Carver
Barry Gross - Pens
Binh Pho - Pierced and carved forms
Dick Sing - Pens, Bowls, Eggs, Ornaments and Humidors
Lyle Jamison - Hollowing
Nick Cook - Full Service Production Turner
Trent Bosch - Teacher and Sculptor

Guest Demonstrators include:

Alan Carter
Jason Swanson
Steve Sinner
Rob Wallace

Registration is limited, places are going fast. Get your reservation in now.

WWW.TURNONCHICAGO.COM

Turn On! Chicago Demonstrator Profile

Trent Bosch



Trent Bosch has been woodturning professionally for the past 19 years. His home is in Ft. Collins, Colorado. He began exploring the art of woodturning while pursuing a Fine Arts degree at Colorado State University. Since graduating he has fully devoted his creative efforts to forming one-of-a-kind sculptural woodturnings. He has a love for teaching, sharing freely with others the knowledge and techniques he has developed. His work is displayed in numerous fine art galleries, the permanent collections of museums and craft centers as well as in many private collections worldwide. Trent has taught and demonstrated techniques for turning and sculpting wood throughout the United States and abroad. He teaches on a regular basis at the John C. Campbell Folk School and at the Arrowmont School of Arts and Crafts. He has been a past demonstrator at CMW and at the NC Woodturning

Symposium in 2007. Trent is an active member of the AAW, currently serving as chair for the

Professional Outreach Program (POP).

From the artist's statement on his website "Working with wood is part of my everyday life. It is my connection to the earth and the environment in which I live. While pursuing my BA in photography and sculpture, I became interested in woodturning.

My philosophy has always been to work in harmony with our environment and not to destroy something in order to create something. In all my art, I use only recycled and easily sustainable woods. Being conscious of this has allowed me to work with the subtle beauty and dimension this discarded wood possesses.

My intent as an artist is to express my feelings about nature, my family and natural processes. I work in series or bodies of work, which allows me to explore these issues in depth. Throughout the creative process I am continually reminded that I have not and will never be content. I will continue to strive to create and strive for that body of work that has yet to be conceived."



A place for learning...”THE FOLK SCHOOL **CHANGES YOU**”

Most of you are aware that I travel around the country in the course of my job. This month I found myself at a conference that was held at the Brasstown Valley Resort in Young Harris, GA. Before I left, I asked the front desk person “how close are we to North Carolina” ...oh, just 7 miles or about 10 minutes tops...and I thought, hmmm maybe this could work...

After doing some quick time calculations (which I am not very good at) I decided if I got on the road early enough I would still be able to make the drive (allowing 4 ½ hours in case of traffic issues) and still fit a quick stop (or two) so I turned right and headed to North Carolina. A mere 10 minutes later I pulled up in front of the Clay County Chamber of Commerce where a lovely lady handed me a map and assured me The Folk School was only 15 minutes away. Back in the car, I arrived at John C. Campbell School a short time later, parked and walked into the Craft House, the retail gallery store for the complex. I only had one word to describe what I saw...WOW! The media and artists are so varied, it is a craft lovers candy store.

My mission for this visit was to tour the woodturning studio so I could write this article and encourage you to make the trip to Brasstown to see this for yourself. I’ve taken a few local classes, even several of the CWT hands on classes and over the years, have attended most of our day long demonstrations. Like most of you, I have not attended any hands-on classes outside of Illinois. It’s been on my “to do” list for years, but there is always some very good reason that it gets put off until...next year. Well, hopefully this quick article will encourage you to consider adding The Folk School to your “this year” list.

I received a campus map at the craft shop (which had the week’s schedule on the reverse side) and was encouraged to take as much time as I like and visit any of the ongoing workshops. The Willard Baxter Woodturning Studio was the only stop on my list. When I pulled up to the studio (after driving right past the painting studio), I was impressed to find cars from North Carolina, Indiana, Georgia and Texas. As I walked up to the building, there was a large covered patio area that ran the length of the building. A grouping of 4 wooden gliders stood just outside the door to the studio along with a trailer full of logs (of course). Just past the patio and across the access road was a covered shelter which was being used as a log processing area. Directly behind the parking area was a small building which, judging from the overhead sheet metal duct work, obviously holds the dust collection system for the studio. To the SE there is a large grassy area with a view that radiates the peacefulness of the area. I could easily imagine how the fields must look in the morning as the sun rises revealing a fresh layer of dew. There is a lighted pathway through the grass to the dining hall and several other buildings.

This week there were two instructors (Charles Watson and Frankie Whetstone) for the 7 students. The studio has 10 fully equipped individual work stations, 5 on each side, (not a bad teacher to student ratio even for a full class). The instructor lathe is set up at the end of the aisle with a student viewing area that has chairs set up on risers to allow the students a clear view of the “classroom” lathe. My visit was on Wednesday just about 10am so the students had been learning since Monday and were all in various stages of their projects. I saw large spindles being rounded. Several finished hollow vessels, a couple of bowls and lots of shavings. One of the instructors

(Continued on page 10)

(Continued from page 9)

was working with a student and the other instructor was on the band saw when I walked in. I told him I was just visiting to see the facility and he offered to put a tool in my hands so I could get a feel for woodturning...I really wanted to take him up on it...it was really tempting! The sound of the lathes running, the tic, tic, tic as the rough log became round then the tools singing in the sweet spot as the shavings flew, extremely tempting!

So, what can you expect for the week you finally arrive at The Folk School? A typical week begins with check in on Sunday. The daily schedule starts with free time in the morning for the Morning walk (on Tuesday it's a bird walk) followed daily by Morning Song which is led by a difference person each day. Breakfast is served at 8:15 and classes run from 9am to noon. Lunch is 12:15 followed by class from 1:30-4:30pm (except Friday which is clean-up time). At 4:45 each day there is a separate activity from a walking tour on Monday to an off-site gallery visit, to demonstrations etc. culminating with the student exhibit and closing ceremonies on Friday evening. Supper is served at 6pm and there is an evening activity planned each evening at 7pm including a book signing, off campus tour, demonstrations and music. Oh and did I mention that there are other activities as well including Yoga and a Farm House chair massage. Suffice to say, there is something for everyone here. Check out is typically Saturday (according to the schedule I received). The class offerings this week included Clay, Marbling, Longbow Building, Knitting, Drawing, Surface Design, Cooking, Jewelry, Shoe Making, Clawhammer Banjo, Kente Cloth Weaving, Blacksmithing and of course, Woodturning.

I believe the lines from The Folk School's marketing may say it best. "Taught by nationally-known instructors, our small-sized classes offer six hours of instruction each day and provide a relaxed, non-competitive environment that makes for a unique experience." Even though my visit was less than an hour, these words were clearly true. Relaxation, non-competitive and I'll add inspired by your surroundings. The visit left me convinced I need to make time this year to come back for more. And next time I'm staying for the week!

I encourage all of our members to consider applying for an educational grant with the intention of using the grant to visit John C. Campbell Folk School. The Folk School catalog of classes can be found here: <https://www.folkschool.org/JCCFS2014/flipviewerxpress.html>. Just think, a whole week with nothing to do but turn, learn some new techniques, meet some new friends, enjoy the scenery, visit the other classes for inspiration and maybe create your first bowl, a fabulous work of art or the next new woodturning trend. It there waiting for you. Just do it!



Trent Bosch

June Minutes

Marie Anderson

(Continued from page 3)

Don McCloskey made a request for donations for Empty Bowls which this year will be December 6th at Oakton Community College. It's a great cause, it's a fun day and your donations will turn into food for people who really need it. Please consider turning something for this great cause.

Don also announced that he is still accepting Pens for Troops and if you would rather, you could also make a material or monetary donation because the corporate sponsors have not been as good as previous years. Contact Don about donating or with any questions.

Darrell Rader discussed the mentoring for this weekend. Darrell's shop will be open the weekend of the 21st. Rich Nye said he will host a session on the 21st at NORMAC. Clint's shop will be open the weekend of the 28th for mentoring. Marie's shop will not be available this month. Darrell once again thanked Clint and Lars for last month's pre-meeting mentoring. It was great to have 2 mentors available before the meeting. Anyone who is interested in becoming a mentor either before the meeting or hosting at their shops can contact Darrell for more information.

Roger Basrak gave the membership update, as of tonight, there are 149 members, 56 attendees this evening and 1 guest tonight Ed from Wheaton – Welcome Ed!

Roger Basrak gave the tip of the month talking about the problem many of us have when we try to use a Jacobs chuck on a morse taper in the tailstock. As the drill is going into the wood, it works just fine, however, when removing the drill from the wood, it can become loose and come out of the tail stock. This tip was taken from a recent AAW magazine (American Woodturner) printed tip on how to make a modification at the tailstock to enable a set screw to be placed to hold the morse taper into the tailstock. This tip started a lively discussion on other methods used by our members.

It was announced that Dan Burlson who does basket illusions turnings will be one of the wood artists at the Milwaukee Art Faire June 20-22.

Wayne Bernahl handled tonight's raffle and took in \$148.00. Al asked if there is anyone interested in volunteering to do the raffle on a regular basis as Chuck has some other obligations that mean he may not be able to continue as raffle chairperson. If you are interested, contact Al.

Marie Anderson gave the Gallery Review. Clint Stevens was asked to fill in at the last minute for the demonstration this evening. Meeting adjourned by 9:45.

Respectfully submitted,

Marie Anderson



Binh Pho, another turner featured at Turn On! Chicago

Glenn Lucas in Town October 4-7



An experienced and well-respected Teacher and Demonstrator, Glenn Lucas's classic bowls, turned by hand from Irish native wood, can be found in quality outlets all over the world. He balances his bowl production with an extensive teaching programme run from his County Carlow 'Woodturning Study Centre'.

A frequent guest Demonstrator at overseas conferences, he also gives Turning Masterclasses at international arts and crafts schools.

In October 2010 he produced the first Irish woodturning DVD 'Mastering Woodturning – Tools and Techniques' and in June 2011 launched 'Mastering Woodturning – Bowl Turning Techniques'. Both DVDs have been favourably reviewed by publications on woodcrafts and are stocked by wood and craft

supply outlets worldwide.

"Pure curves appear everywhere in nature. From the roundness of a full moon to the flowing curve of an onion bulb. I select shapes from this rich source. I add precision and crispness."

"Balancing nature-inspired shapes with man's technical precision is at the core of my work. Colour and grain of Irish woods are chosen carefully to complement the design of the piece."

"I make my pieces from native Irish hardwood sourced locally. Each piece is dried slowly in a kiln to ensure that it is suitable for use in the home. This process takes up to eight weeks. It is then hand turned on a lathe to produce the purest of form. Finished with natural oils to protect the wood this also maintains the richness of the grain."

Glenn has 24 years of production turning experience and will share his knowledge using his own unique approach. The all-day demo will include making a utility bowl, tool sharpening for producing the best shavings, and plates and platters. The one-day class will concentrate on bowl making and sharpening, the two-day class will have the bowl making and sharpening and will also include plates and platters

Please note that the education committee provides one free demo for current members each year. This is it. You must register to be admitted and you must be current in your dues.



2014 Meeting Agenda

Month	Gallery Review	Demonstration
January	Marie Anderson	Ken Staggs— Basic Bowl Review
February	Paul Pyrcik	Dick Sing - Turning Eggs
March	Andy Kuby	Jason Swanson - Segmented Pepper Mills
April	TBD	Roger Basrak - Turning a natural edge outside burl bowl
May	Darrell Rader	Lars Stoles - Hollowing
June	Marie Anderson	Don Hamm - Ornaments
July	Don McCloskey	Marie Anderson - Miniatures
August	TBD	TBD
September	TBD	TBD
October	TBD	TBD
November	TBD	TBD

Chicago Woodturners Board of Directors and Committee Chairs 2014

President	Alan Miotke	847-297-4877	alan.miotke@chamberlain.com	920 Sumac Land	Mount Prospect, IL 60066
Vice President	Don McCloskey	847-420-6978	mccloskey@ameritech.net	2028 Gilboa Ave.	Zion, IL 60099
Secretary	Marie Anderson	630-773-9182	danmar12@yahoo.com	5N181 Central	Itasca, IL 60143
Treasurer	Matthew Schmitz	847-439-6023	angelhaus@comcast.net	406 E. Noyes	Arlington Hts , IL 60005
Past President	Scott Barrett	847-256-9121	dr@bdental.net	46 Bridlewood Lane	Northbrook, IL 60062
Newsletter Editor	Terry McCammon	630-697-4900	terry_mccammon@ameritech.net	1715 Highland Ave	Wilmette, IL 60091
Membership	Julie Basrak	847-358-2708	cwtjulie@hotmail.com	563 West Ruhl Road	Palatine, IL 60074
Librarian	Robert Schultz	815-245-7495	grislakera@att.net	2819 South River road	McHenry, IL 60051
WebMaster	Scott Barrett	847-256-9121	dr@bdental.net	46 Brindlewood Lane	Northbrook, IL 60062
Raffle	Chuck Svazas	708-482-3866	csvazas@sbcglobal.net	707 Bransdale Rd	LaGrange Park, IL 60526
Tools & Equipment	Don McCloskey	847-420-6978	mccloskey@ameritech.net	2028 Gilboa Ave.	Zion, IL 60099
Set-up / Clean-up	Duane Painter	224-643-7696	duane.painter@comcast.net	25680 Lehmann blvd	Lake Villa, IL 60046
Audio & Video Co-Chair	Jerry Kuffel	847-895-1614	kuff@sbcglobal.net	532 Berkshire Ct.	Schaumburg, IL 60193
Audio & Video Co-Chair	Dawn Herndon-Charles	630-588-8431	dcharlesster@gmail.com	1545 Wiesbrook Road	Wheaton, IL 60189
Educational Committee	Darrell Rader	815-648-2197	d.rader@woodfineart.com	10703 Allendale Rd.,	Woodstock, IL 60098
Demonstrations	Rich Nye	630-406-1855	nyewoodturning@earthlink.net	40W257 Seavey Road	Batavia, IL 60510

June: Meeting and elsewhere



Marty Knapp Looking for Flame Figure



Contemplation



Marie Anderson Gallery Review

Member's Gallery

June Gallery



Bill Brown - Ash



Bill Brown - Walnut



Bill Brown - Walnut



Anne Nieman (Ken Staggs Bowl)



Roberto Ferrer - Oak

Member's Gallery

June Gallery



Bob Schultz - Various



Bill Robb - Lots



Dawn Herndon-Charles - Maple



Andy Kuby- Ash



Don Johnston - White Oak

Member's Gallery

June Gallery



Ken Staggs - Plum



Jerry Kuffel - Box Elder



Francisco Bauer - Box Elder



Larry Fabian

Member's Gallery

June Gallery



Honorable Mention For Having Fun

Mark McCleary - Poplar



Mark Johansen - Cherry



Mark Johansen - Norway Maple



Mark Johansen - Cyprus



Rich Nye - Maple

Member's Gallery

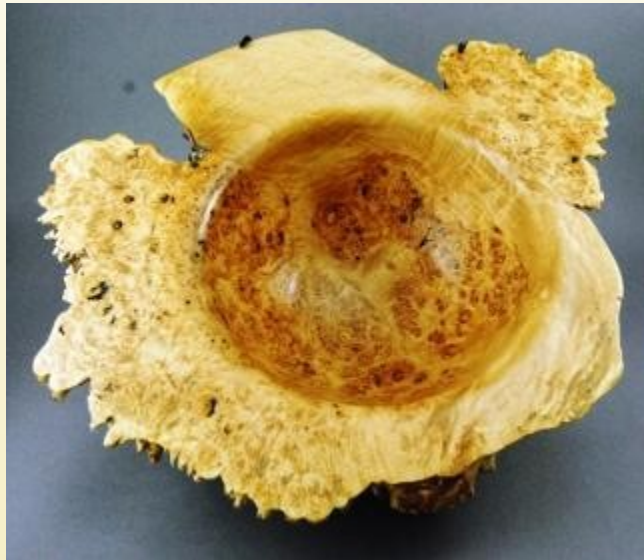
June Gallery



Marty Knapp - Walnut



Marty Knapp - Russian Olive



Roger Basrak - Maple



Rich Nye - Maple



Rich Nye - Maple



Roberto Ferrer - Oak

Member's Gallery

June Gallery

Editor's Choice



Editor's Choice

Lars Stole

Excellent turning execution plus perfect fitting between wooden bowl and the pewter ring. The pewter bowl was flawless. Besides I am a sucker for spun work

You are welcome to agree or even disagree with my choice. It is a democracy but I am the editor.

For Sale, Trade, or Wanted

For Sale

OneWay 1224 Lathe w/Bench and Wired Mag Mount Remote (start/stop/reverse/speed).

220v single phase input to inverter drive for three phase motor provides complete control of ramping, braking, and high torque across entire speed range. Two speed range (0-1200 & 0-2400RPM) spindle belt drive.

- 24” Bed Extension
- 3”, 9”, 12”, and 16” Tool Rests
- Nichols 12” Center Steady
- 3” Faceplate
- Ball Bearing Live Center w/Accessory Cone and Knockout Bar
- Spindle Wrench
- Accessory Post w/Plug Strip
- Four Prong Drive Center

Used **\$1,775.00**

Contact: **Steve Sinner, 563-340-2938, ssinner@mchsi.com**

Turners and Woodworkers needed

Amber of Mike Bell Antiques and Reproductions contacted the Chicago Woodturners looking for turners and woodworkers to supply them with turned components for the furniture and reproductions they create. They are a small custom shop that produces hardwood furniture and large cabinets for the home. They are always looking for local suppliers and need table columns, table legs and chair parts. For further information, their website is <http://www.mikebellonline.com/>

If you are interested in working with this company, please contact Amber at 773-278-9374 or bellwarehouse@mikebellonline.com **Please tell her you saw the announcement in the Chicago Woodturners Newsletter.**

**Items of interest to woodturners for sale,
wanted, trade or free are welcome.**

Non-commercial ads only, please.

Events of interest to woodturners are also welcome

**To place an ad, contact Terry McCammon
terry_mccammon@ameritech.net**

Events

Turn-On Chicago 2014 August 15-17, 2014
Conference Center at the University of Saint Mary of
the Lake, Mundelein, Illinois.

4th Segmenting Symposium, October 16-19, 2014
San Antonio, Texas at the Drury Plaza Hotel



Visit our website

Monthly Meetings
are held on the 2nd
Tuesday of each
month at:

Christian Liberty
Academy
502 W Euclid Ave
Arlington Heights,
IL
7:00-10:00 PM

Please join us
All are welcome.

chicagowoodturners.com

Membership in the
Chicago Woodturners
is available to anyone
wishing to increase
their turning skills
through education,
discussion and
critique. Annual dues
are \$25.00 for a single
membership and
\$35.00 for a family.
Visit our website for
an application or
contact:

Julie Basrak

Membership
Chairman

The Chicago Woodturners is
a chapter of the American
Association of Woodturners
(AAW). Visit their website for
more information.

www.woodturner.org