



As the Wood Turns

The monthly newsletter of the Chicago Woodturners



22 Years of Art, Craft, Technology, and Tradition

In this Issue

- At our next meeting, pg. 7
- Rose engine demo, pg. 7
- SOFA Chicago, Pg. 7
- A Ginkgo Moment, pg. 9
- Turn-On! Chicago, pg. 11
- John Eslinger's hollow finials, pg. 12
- Member's Gallery, pg. 13-16

Next Meeting

October 13, 2009

7:00 PM

Woodcraft Supply

1280 E. Dundee Rd.

Palatine, IL

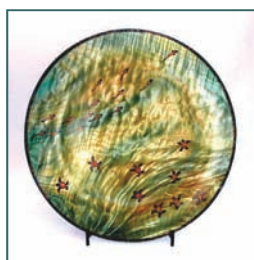
847-776-1184

Regular Features

- Curls From the President's Platter, pg 2
- Committee Reports, pg 3
- AAW News, pg 6
- Meeting Minutes, pg. 8
- Events Calendar, pg. 10
- Editor's Choice, pg. 15
- A Closer Look, pg 17

Stephen Hatcher Demonstration

October 31



We are pleased to welcome Stephen Hatcher to Chicago for a full-day demonstration on

Saturday, October 31, 2009.

Stephen's specialty is inlaying mineral crystals into turned artwork.

Join us for a great demo, certain to add another tool to your artistic arsenal, and certain to entertain and inspire.

The demo is October 31 at our meeting space at Woodcraft Sup-

ply, 1280 E. Dundee Road in Palatine, IL. Doors open at 9:00 am. Admission is \$30.00, but members may pre-pay at our meeting on October 13 and receive a 50% discount. The CWT will provide coffee, donuts and soft drinks.

Bring your chair, your notepad and your camera. Stephen will show all of the techniques needed to add mineral inlays to your own work. More on page 5.



Rose Engine Demonstration at our next meeting

October 13

Dan Carter, from East Moline, IL has been experimenting with the Rose Engine and Ornamental Turning since 2006, and will bring a Rose Engine Lathe to the CWT at our October meeting.

At this point, most of us say: "Rose Engine? What is that?" Dan promises to make the complex simple, or at least bring a complex concept into the realm of the possible. Dan's demo will be in the first half of the meeting, followed by the Gallery Review. More on page 7.



**October Meeting Schedule Change
Demonstration is at 7:00 followed by the Gallery Review**



Phil Brooks

Woodturning can be a physically demanding pursuit. Long hours standing at the lathe (but hey, that's how you learn), lifting heavy logs, and repetitive motions can take their toll. Frequent breaks and stretching can reduce the chance of strain and injury. And act your age!



Curls From the President's Platter

Phil Brooks

As most of you know, I am a big advocate of lathe safety. I have written a demonstration on this subject and have presented it twice to our club and once to the Windy City Woodturners. Woodturning can be great fun, but it can be dangerous if not done properly. Safe and effective use of the wood lathe requires you accept the responsibility for learning the correct use and operation of all of your equipment before using it. The safety categories I discussed in my demonstration were eye protection, lung and skin protection, hearing protection and general body protection related to misusing your equipment. I have recently discovered a new area of safety that I need to talk to you about. It's trying to move things around in your shop that are beyond your physical capability. As we get older, many of us continue to believe that we still have the body of a

twenty year old and unfortunately continue to act that way. I have always done a good job of using my legs when I'm lifting and therefore have not had any back problems. However, some-



where during the period when I installed a hundred sheets of drywall in my basement, hauled around dozens of sheets of ¾"plywood or MDF and moved lots of heavy equipment around my shop, I developed a hernia. It never occurred to me that I could be doing damage to my body since I never felt any adverse effects from it. Never-the-less, to continue my discussion on what not to do; the day after my surgery I decided I felt pretty good and overdid my activity by walking a mile to

get some exercise, as the doctor suggested. However, after calling him the next day because of excessive pain, I found out he meant I should walk a block, not a mile. So my twenty year old mentality got me in trouble again. I'm going to try to take my wife's advice and try to act my age. As I write this, it has been two weeks since the operation and I'm starting to get back to normal; if you consider not being able to lift anything over ten pounds for the next two months normal.

So, please take my advice, get someone to help you move things, don't lift things that you think might be too heavy, lift with your legs and most importantly, act your age!

Hope to see you at the next meeting.

Phil

Membership Updates

Al Miotke

Membership grew to 180 in September with 72 current members in attendance. We had 4 new members and 2 returning members join the club in September. Both **Glenn McMurray** of Batavia and **James Pio** of Barrington Hills are returning after a brief departure. Welcome back Glenn and James!

Bob and Sue Wulff of St. Charles became new members. Both are new to woodturning and have a special interest in Pen turning and plan to start a business specializing in pens. **Robert Sandberg** is a new member from West Chicago. Robert is a wood-

worker who recently added a lathe to his arsenal of woodworking tools. Robert showed his talent by bringing a challenging and well executed stave constructed box to the gallery. **Rick Bucker** of Mahomet, IL, a city outside of Champaign, also became a member. Rick is also new to woodturning. Welcome to the Chicago Woodturners Bob, Sue, Robert, and Rick!

We also had three guests, Paul Levine of Cary and Mathew Healy of Oak Lawn are new to woodturning. Kelley Bisell of Woodstock has been turning for 5 years and has a company with

the website www.fromtreestotreasur.com.

Hopefully seeing our club in action will inspire our guests to become members.

The Greeter program officially kicked off in September and I am confident that it will be very helpful in getting guests and new members familiar with the club's format and benefits. Thanks to the two new volunteers who signed up in September, **Alan Carter** and **Stan Herman**. A special thanks to **Sandy White** for taking the lead to organize this new program.

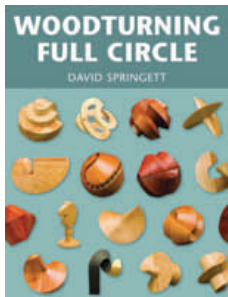
Greeter Program

To help visitors and guests feel welcome and comfortable, volunteers will take a few minutes to introduce visitors to our meeting area, explain the meeting agenda and answer any questions a new member may have. Greeters may introduce folks to Committee and board members, explain the various programs and benefits CWT members enjoy, and help to make a first (or second) time visitor feel comfortable.

You remember your first visit to the CWT, and how you may have felt somewhat overwhelmed. You can help prevent this for our guests by volunteering 10 minutes of your time at a meeting. To participate, contact **Sandy White** 847-913-1778 Or email at: sanfordd6@comcast.net

Library Updates

Clint Stevens



The library has just acquired "Woodturning Full Circle" by David Springett. This book illustrates methods of turning streptohedrons (twisted polyhedrons). They may look like a woodturnings inspired by "Scientific American," but turners such as Hans Weissflog have helped make them popular. If your sense of adventure drives you to try something different, this book will be available for checkout at the October CWT meeting.

If you have a suggestion for a library addition that CWT members should have available, or a worthy donation, please chat with librarian Clint Stevens.

Now for some shame-based motivation. If you have an overdue library book or DVD, please return it. Check that stack of books in the corner just in case an overdue book is stuck there, and just bring it in. The CWT needs to take a physical inventory of the library, and your help in returning over-due items is appreciated.

There, that was painless, wasn't it?

On the Raffle Table

Chuck Svazas

In October, it's pen turning time. We'll have some kits and blanks plus a cute little Ryobi pen lathe. This little gem will allow you to turn anywhere there is a power outlet.

The raffle provides the financial means to keep the CWT going and growing, and provides a lot of great items for you, the raffle ticket buying member. See you in October!

Raffle Tickets
\$1 each
Get the family
pack of 13 tickets
for only \$10!

Sphere Emerging From a Cube demo by Clint Stevens**Thomas Stegall****Clint Stevens****Pascal Oudet****3 stages of emergence****The finished sphere, emerging from the cube**

This month we were treated to a demonstration straight from the AAW National Symposium in Albuquerque, New Mexico. You may have noticed in the Gallery review last month a refreshingly unfamiliar turning, a spherical box emerging from a solid cube. This turning originated with Pascal Oudet, a young woodturner from France, and was brought to us care of Clint Stevens. Clint observed Oudet's demonstration at the symposium and, with a handout from Oudet, went home and made a faithful reproduction that caught our attention.

What makes this box particularly intriguing is that roughly three quarters of the sphere emerges from the solid block of wood, with continuous grain from cube to box to lid. Like many an experienced woodturner, Clint was able to take a complicated, multi-step, multi-axis turning and make it seem within the reach of the novice woodturner, a challenging task considering the nature of this turning. Clint provided a detailed ex-

planation and handout to guide you through each of the steps. Additional handouts can be obtained from the CWT website.

Clint first explained the importance of a truly square block of wood from which you start. This block is then cut into two pieces roughly in the proportions of two-fifths and three fifths. While the size of the block you start with is limited primarily by the size of your lathe (because this will be done largely as an extremely off-center turning) you can use any size or dimension you choose. The thickness of the small piece will determine the maximum diameter of the sphere and must be cut evenly and squarely. The pieces are joined together (Clint recommended "Gaffers tape" due to its strength and clean removal), and tenons cut at the end of each of two perpendicular axes for a jaw chuck. The convergence of the two axes will determine the center of the sphere. The interior of each half is turned on one axis with a relief in the box

interior for a ring tenon for the lid. The ring should be turned after the box interior but before the lid. On the lid block you cut a thin tenon/ring on the face which will later serve as a template for a perfect exterior sphere on the other axis. You then join the pieces together and turn the exterior on the perpendicular axis using the appearance of a void as your guide (created by your tenon/ring from the last step). Left handed turning will prove to be safer as you remove excess wood without removing forearm skin. Varying your finishing treatment of the sphere and cube will bring an added contrast and flare to your finished piece. Thanks, Clint, for an interesting and well-presented demo. What's next?

Clint's handout is available at the CWT website.
www.chicagowoodturners.com
Click on the "demo handouts" tab

2009 Guest Demonstrators, and Looking Towards 2010

Paul Shotola

Throughout the course of the year, the CWT invites woodturning demonstrators from around the world to come to Chicago to teach and demonstrate their techniques. In 2009, we featured Betty Scarpino, Bonnie Klein, Alain Mailland and Nick Cook. Our final all-day demonstration this year is by noted artist Stephen Hatcher.

Attendance at all of our demos has been strong, and response from the attendees has been universally positive. Binh Pho is the man responsible for selecting our demonstrators, and he strives for a balance of "art"

and "craft." 2009 has been a great year, with something for every turner, regardless of interest, experience or skill level.

Jan Shotola is the person who actually makes sure that demonstrators arrive, have a place to sleep and students to teach. As far as sleeping arrangements go, Clint and Sherry Stevens and Richard Nye have opened their home to many demonstrators this year.

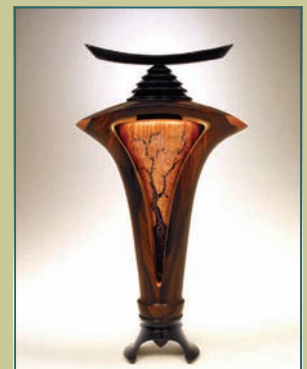
If you haven't been attending these demonstrations, you are missing out on the best bargain in turning education. CWT mem-

bers enjoy a 50% discount by pre-registering at a meeting. The October 13 meeting is the last chance for members to pre-register for Stephen Hatcher, so mark October 31 in ink, and bring your checkbook (it's only \$15!) to get in on a great day with a great teacher and demonstrator.

Watch this space for our 2010 lineup. Binh is hard at work searching out the most interesting and innovative demonstrators available. 2010 promises to have as great a lineup as 2009, with something for everyone.



**Stephen Hatcher
October 31**



2009 Guest Demonstrator Schedule

Stephen Hatcher, Olympia, WA
 October 31- Demonstration
 November 1- One-day class \$80 + \$40 lab fee
 November 2, 3 -Two-day class \$160 + lab fee

Inlay of mineral crystals to produce images and landscapes in turned work. Lab fee covers minerals used and burrs for carving.

To Register for Hands-On Workshops

Contact Jan Shotola at 847-412-9781 or jshotola@yahoo.com

Classes are limited to six students per session. Register now to guarantee your place in these classes. Limited spaces are available.

The 2010 Guest Demonstrator Schedule will be announced soon

2009 Monthly Meeting Events

Scott Barrett

MONTH	DEMONSTRATION	GALLERY REVIEW
October	Dan Carter: the Rose Engine	Alan Carter
November	Darrell Rader: Christmas ornaments	TBA
December	Holiday Meeting	

**Visit Stephen's website
www.stephenhatcher.com**



Visit the AAW web-site:
www.woodturner.org

AAW Board Elections

- Voting ends on October 21, 2009
- Use the ballot provided in your AAW Journal
- Your vote counts!
- If you are not an AAW member, this is a great time to join.

AAW News and Updates

I've been a member of the AAW for just 3 short years of the association's 23 year existence. Except for a lucky few, most of us have not had the opportunity to watch the AAW grow and mature from its simple beginnings in 1985. I've learned that one good way to see the AAW's evolution unfold is from the past issues of the AAW's Journal. The AAW offers all issues from the 1st issue in 1986 thru 2006 on 3 CD's for sale for \$32 each to AAW members. The issues are full of history, how-to articles, biographies of artists, AAW news, and much more. Since I'm always looking for new reading material, I felt it was an excellent value and recommend it to everyone. With that recommendation said, I also realize that not everyone may be inclined to read thru the over 90 issues in the CD set.

Well, stay tuned for a *Brief History of the AAW* through the Journals. In the coming months I will provide my abridged summary of the Journals content from 1986 to present. Now, on to some current events. The next time you harvest that premium piece of wood from your neighborhood maple tree, keep in mind AAW's juried exhibit at the 2010 national symposium in Hartford, CT. The exhibit has the theme "Maple Medley- An Acer Showcase." Entries are open to all AAW members and you can find instructions on submitting your entry on both the AAW website as well as the fall issue of the *American Woodturner Journal*. Dig deep to discover your most creative piece from a species in the Acer family and get turning. You have until February 8 to complete your masterpiece and get

Al Miotke



your submittal on record. Finally, don't forget to mail your ballot for this year's 3 open positions on the Board of Directors. Your vote helps to keep our association strong. As was mentioned at the last club meeting, this year you must use the official ballot included inside the fall issue of the journal and mail it in the envelope provided.

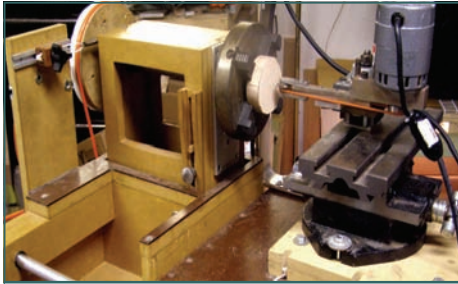
Chicago Woodturners Board of Directors and Committee Chairs 2009

President	Phil Brooks	847-548-6477	brookspphil@sbcglobal.net	1052 Cheswick Dr	Gurnee, IL 60031
Vice President, Web Master	Scott Barrett	847-562-9121	dr@bdental.net	46 Bridlewood Lane	Northbrook, IL 60062
Secretary	Carole Floate	847-295-2631	cfloate@yahoo.com	200 W. Witchwood	Lake Bluff, IL 60044
Treasurer	Jan Shotola	847-412-9781	jshotola@yahoo.com	1865 Western Ave.	Northbrook, IL 60062
Past Pres., Newsletter Ed.	Paul Shotola	847-412-9781	p.shotola@comcast.net	1865 Western Ave.	Northbrook, IL 60062
Membership	Al Miotke	847-297-4877	alan.miotke@chamberlain.com	920 Sumac	Mount Prospect, IL 60056
Librarian	Clint Stevens	773-852-5023	clint.stevens@comcast.net	1635 S. Chesterfield	Arlington Hts., IL 60005
Raffle	Chuck Svazas	708-482-3866	csvazas@sbcglobal.net	707 Bransdale Rd	LaGrange Park, IL 60526
Tools & Equipment	Don McCloskey	847-420-6978	mccloskey@ameritech.net	2028 Gilboa Ave.	Zion, IL 60099
Demonstrations	Binh Pho	630-365-5462	toriale@msn.com	48W175 Pine Tree Tr.	Maple Park, IL 60151
Set-up / Clean-up	Bill Robb	847-931-1876	akmtns1@comcast.net	46 Lone Dr. Unit C	South Elgin, IL 60177
Audio & Video	Lee Svec	847-331-0715	svec@att.net	661A Fieldcrest Dr.	South Elgin, IL 60177

At Our Next Meeting: October 13

Paul Shotola

At our October meeting, Dan Carter from the Quad Cities will demonstrate the Rose Engine.

**Rose Engine Lathe**

Plan to join us on October 13 for this special demonstration. Dan is also making the lathe available to the CWT so our members can try out this fascinating side of turning. Our own Alan Carter (no rela-

tion to Dan) will conduct the Gallery Review. Alan is a maker of studio furniture (that's also known as *expensive* furniture) in his shop in Lisle, IL. You can see his work at www.alancarterstudio.com. Alan brings a fresh, contemporary look to his turnings and furniture, and we are looking forward to his review. October is also the month in which we accept nominations to the CWT Board. The offices of President and Secretary expire this year. If you are interested in serving, or know of someone who is, October is the time to speak up.

SOFA Chicago

November 6-8

SOFA Chicago, November 6 - 8, Navy Pier, Chicago. SOFA is the premier annual event for Sculptural Objects and Functional Art. Galleries from around the world will display work by cutting-edge artists in every area of craft, with a special emphasis on turned wood. The CWT, in conjunction with the Collectors of Wood Art, will present a series of live woodturning demonstrations. If you only journey into the city once this year, make it to the SOFA show. Visit their website: www.sofaexpo.com

American Association of Woodturners at Sofa Chicago

November 6-8



**Jakob
Weissflog**

The AAW will hold a panel discussion at SOFA, along with an exhibition of turned art: "Influence and Inspiration: The Evolving Art of Woodturning." The exhibit features Mentors and Mentees, encouraging younger artists in our field. The panel discussion will include Kevin Wallace, Binh Pho, Joey Richardson, Hans Weissflog and Jakob Weissflog. The discussion is scheduled for Saturday, November 7, 2:00-3:00.

**Special
October
Demo**

Dan Carter, East Moline, IL demonstrates the Rose Engine Lathe. The demo is at 7:00, **before** the Gallery. Come early for a good seat.



CWT Mentoring Program

Mentoring is the cornerstone of woodturning education. Ask any experienced turner, and they will tell a story of having had the benefit of a more experienced turner taking them under his wing. The CWT wants to make mentoring available to all of our members. At the October meeting, there will be sign-up sheets for both those who would like to be mentors and those who are searching for mentors and teachers. We'll help with the matching-up, so all of us may benefit from the experience of our fellow members. Stop by the Membership Desk to sign up.

September Meeting Minutes

Carole Floate

CWT Meeting Minutes September 8, 2009

Commenced: 7:00pm

Adjourned: 9:35pm

Opening Remarks:

Vice President Scott Barrett opened the meeting at 7PM. A thank you went to Don McCloskey for his "Open Segmented" Demo in August.

Woodcraft has some additional pepper mill kits from the Nick Cook class available.

Clint Stevens will demonstrate "A Sphere Emerging from Cube" this evening. Paul Shotola will conduct the Gallery Review.

In October, Dan Carter from the Quad City Woodturners will demonstrate Rose Engine Turning at our meeting. This demo will be at the beginning of the meeting, with Alan Carter conducting the gallery review following the demonstration.

The Ohio Valley Woodturning Guild presents "Turning 2009," a woodturning symposium in Cincinnati, OH on October 16-18. See their web site:

www.ovwg.org/turning2009/index.htm for more details.

Don McCloskey on the CWT Lathe Auction:

Don McCloskey informed all members present that the final bidding on the lathes would be at 8PM. Both lathes

were bid on. The Jet lathe went for \$400 and the other lathe went for \$800.

Committee for Educational funds:

Paul Pycik will chair a committee to provide direction for the use of the CWT educational funds. Andy Kuby, Roy Lindley, Mark McCleary, Darrell Rader and Tom Waicekauskas volunteered to serve on the committee.

Treasurer's Report:

Jan Shotola gave a report on the balance of our account. We are solvent. She also said that there were several openings still available for the Stephen Hatcher hands-on class. Jan announced that a new sign-up list for turning mentors is available.

Membership Report:

Al Miotke, membership chairman, reported that we have 179 members and 66 members attending this meeting.

Sandy White talked about our "New Member Greeter Program." He asked for members to sign up to help new members and guests at our meetings. Greeters will partner with new members and guests for the evening and help make them feel at home.

New members: **Bob & Sue Wulff**, St Charles; **Rick Bucker**, Mahomet, IL; **Robert Sandberg**,

West Chicago.

Retuning members:

Glenn McMurray, Batavia; **James Pio**, Barrington Hills. Guests: **Matt Healy**, Oak Lawn; **Paul Lavine**, Cary; **Kelly Bissell**, Woodstock.

Other:

Darrell Rader talked about the election of new officers for AAW. All votes need to be on the ballot insert in the AW Journal. No votes will be taken off the AAW web site. Voting concludes October 21, 2009. Your vote counts!

Don McCloskey reminded the membership of our participation in the Empty Bowls Project at Oakton Community College, a fund raising event for local food banks. Donations to this program will be accepted through December 4, 2009. Any turned item is welcome, as all donated items will be presented in the organization's silent auction. Carole asked how many items our club needs to bring in and Don said we should work toward 100 contributions. They will be used as auction items. All monies go to local food banks. More info is available at www.emptybowls.net.

Cleanup:

Thanks, Bill Robb, for getting all the help needed to get the clean-up job done.

A Ginkgo Moment

Marie Anderson



In September, Rich Fitch brought in a couple of “new and improved” weed vase arrangements including one that was turned from a very unique wood. Surprisingly, this turning has given me a unique opportunity to educate our members a little...so bear with me for an extremely short lesson in Taxonomy.

“Taxonomy” is the nomenclature of plants (in layman’s terms – it’s how every living thing is scientifically classified/named). You may remember grade school or high school science class where you learned about **Kingdom, Phylum, Class, Order, Family, Genus, Species, variety** and then you can add **cultivar**. You probably have trees around your yard that you know – Maple, Elm, Walnut, Apple etc. In Taxonomy, they have alternate names based on **KPCOFGSv** Why? Well, scientifically it’s necessary to actually know which plant you are talking about. Is it *Acer saccharum* (Sugar Maple) or *Acer platanoides* (Norway Maple) or

Need more Ginkgo? The web has plenty of info. Start here:
<http://www.buzzle.com/articles/history-of-the-ginkgo-biloba-tree.html>

And:

<http://www.all4naturalhealth.com/ginkgo-biloba-tree.html>

Acer negundo (Box Elder), all of which vary greatly from their looks – bark, leaf size and shape, shape – rounded or columnar, disease tolerance, strength, longevity and probably most importantly for woodturners, the texture and grain of their wood.

The unique fact about Rich’s Ginkgo vase is, in plant classification, where usually there are many different plants in any given Family, Genus & Species there is only



Burned leaf design

ONE plant in the Ginkgoaceae family and that is the Ginkgo biloba (commonly called Maiden Hair Tree). This tree is quite literally a living fossil. The leaf fossil of this unique plant dates back 270 million years, which is actually in the time of dinosaurs! The oldest tree currently grows in China and is about 3500 years old. Pretty cool huh?

Even though the Ginkgo tree is unique, it’s wood is fairly nondescript, light colored and with no clear graining patterns. This may be why Rich has taken to adding very detailed wood-burned leaf patterns onto his weed vases. The effect is stunning and truly shows how you can “kick it up a notch” (thanks, Emeril) when you put your mind to it. Nice Job Rich!



Prairie Grass vase in Ginkgo Biloba

Sometimes known as the “maiden hair” tree, Ginkgos have been around since the time of the dinosaurs



A ginkgo meets its fate, 270 million years ago

Bill Robb

Meeting Volunteers

To volunteer
your help at
our events
contact Bill
Robb
akmtns1@
comcast.net
847-931-1876

**Stephen Hatcher
Demonstration Oct. 31
Volunteers**

Set up/ Clean up: Thomas Stegall, Mary Olson, Joe O'Malley, Don Hamm, Bob Flaherty, George Evanson, Kris Southerland
Coffee: Carole Floate
Donuts: Don Heard
Ice & Soft Drinks: Mary Olson

CWT Meeting Volunteers
October 13:
Jon Keith, Thomas Stegall, George Evanson

**At the Stephen Hatcher demo, if any of the volunteers are available to arrive early for set up, contact Bill Robb to confirm the schedule.
Thanks to all of our volunteers.**

Thanks to the
volunteers at
the
September
CWT
meeting:
Mary Olson
& George
Evanson

Upcoming Events: News of classes, Symposia and other events of interest**October**

- *Turning 101, Carole Floate, October 10 & 11, Woodcraft Woodridge*
- *Ohio Valley Woodturners Guild, Turning 2009 Symposium, October 16 - 18, Cincinnati, OH*
- *Pen Turning 1, Don McCloskey, October 17, Woodcraft Palatine*
- *North Carolina Symposium, October 23 - 25, Greensboro, NC*
- *Turn a Pepper Mill, Carole Floate, October 24, Woodcraft Palatine*

November

- *SOFA Chicago, November 6 - 8, Navy Pier, Chicago, IL*
- *Pen Turning 1, Don McCloskey, November 14, Woodcraft Palatine*
- *Turning 101, Carole Floate, November 14&15, Woodcraft Woodridge*
- *Segmented Peppermills with Jason Swanson, November 8 & 15, Woodcraft, Milwaukee*
- *Sharpening Class with Jason Swanson, November 12, Woodcraft, Milwaukee. Includes Wolverine and Tormek sharpening.*
- *Pen Turning 1, Don McCloskey, November 21, Woodcraft Woodridge*
- *Turning 101, Carole Floate, November 21 & 22, Woodcraft Palatine*

December

- *Turning 102, Carole Floate, December 12&13, Woodcraft Palatine*

To add events
to the calendar
contact Paul
Shotola
p.shotola@
comcast.net
847-412-9781

Any events of
interest to the
CWT member-
ship are
welcome.

Turn-On! Chicago 2010

August 20-22, 2010

Your Symposium Committee has been hard at work making plans for our 2nd Midwest turning symposium. Although it is a year in the future, experience with the 2008 gathering reminds us that time does, indeed, fly. Especially when you are planning an event as elaborate as this. Throughout the next 12 months, this page will keep you up to date on the plans for our symposium.

Get used to the acronym **TOC**, you'll see it used quite often!

The key to a great symposium is great demonstrators, and we have lined up the best of the best. We also have plans for some hands-on events, pen turning for our troops, a fantastic trade show and much, much more.

Mark your calendar now and plan to join the fun at **TOC 2010!**

The TOC website is currently being fine-tuned. As we finalize details of the symposium, they will be announced in this newsletter and posted on-line.

Turn-On! Chicago 2010**August 20-22, 2010****Mundelein, IL****Midwest Woodturning Symposium****Jimmy Clewes****Kirk DeHeer****Don Derry****Cindy Drozda****Carole Floate****Lyle Jamieson****David Nittmann****Binh Pho****Dick Sing****Malcolm Tibbetts****Don Ward**

TOC 2010 will again be held at the beautiful campus of University of St. Mary of the Lake, located in Mundelein. Just 30 minutes north of Palatine, USML is a Catholic seminary on 900+ acres. The wooded grounds and classic architecture provide an environment of serenity and relaxation not usually found in the Chicago area. Plan to attend, decompress, learn and be entertained at **Turn-On! Chicago 2010.**



John Eslinger

One of the more unique items on the September Gallery table was a hollow vessel by John Eslinger. In addition to being a nicely-done vase, the finial was hollowed. Yes, a hollow finial. This is the sort of technique that looks nearly impossible, but John explains the process so you can add it to your bag of tricks.

Hollowing a Finial

While carving a finial you will need a dust mask and be careful to watch the rotating bur. I start with a 1.2 mm ball bur and finish with the 1.5mm ball bur. With the burr in the rotary tool, check its length so it doesn't exit the oppo-



hollow back and forth from an upper hole down or a lower hole up or, as I said before, across. Be careful when entering and exiting a hole as this is an area where a bur can do damage.



site side of the finial. When entering the wood, try to have the bur perpendicular to the surface or it will want to run across the wood.

Make a series of random plunge entry holes into the wood. After all of your entry holes are complete then enter various holes and with a rotating motion try to connect the holes inside. When the inside is open enough I

Clean inside with compressed air, but be careful as the carving can take on enough air to launch the finial from your hand. If you have a small amount of material floating inside of the carving you just have to work at removing it. My wife Pixie usually holds the material with a very thin pair of tweezers while I use the bur to carve it away. Give it a try, you'll amaze your friends and add another level of value to your work.



The burs used are from Rio Grande, 1-800-545-6566; See page 298 of the current catalog. We have set # 344-335. \$11.50



Rio Grande is primarily a supplier to the jewelry-making trade, but they have a broad range of tools and supplies that turners will enjoy. Check their website:

www.riogrande.com

Members' Gallery

September Meeting



Max Schoenberger
Sycamore, padauk flower vase



Al Miotke
Spalted maple



Bill Brown
Walnut, iron stand



Bill Robb
Mystery salt shaker



Unknown artist
Walnut



Glenn McMurray
Maple bowls

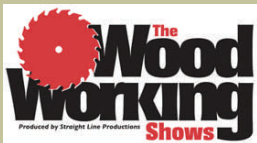


Bob Schultz
Garden dibble

It's all
in the
DETAILS



**The Woodworking Show
December 11-13
Schaumburg, IL**

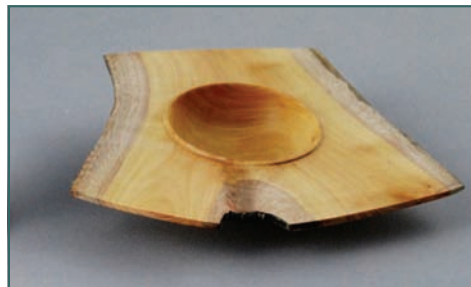


The Woodworking Show comes to Chicago December 11-13 at the Renaissance Hotel in Schaumburg. The CWT will have a demonstration booth at the show, along with nearly every other woodworking and turning vendor you can think of. Stay tuned for details on how you can participate.

Members' Gallery



John Eslinger
Cherry, maple,
pearl and acrylic



Paul Shotola
Buckthorn



Unknown
artist
Maple
snowman
ornaments



Marty Knapp
Mahogany, slumped glass

September Meeting



Bill Brown
Cherry, acrylic paint



Jason Swanson
Staved pens



Thomas Stegall
Osage Orange, glass



Larry Fabian
Miniature Birdhouses

Members' Gallery

September Meeting

Editor's Choice

Robert Sandberg
Lidded vessel in cherry

A brand-new CWT member, Bob approached the Gallery with the correct attitude. Not just "look what I've made", but "here's what I've made, and how can I improve on it?" He truly wanted feedback on his work in the hopes of improving in the future.

A complicated project, his vessel incorporates stave construction, a fitted lid and even a ball-bearing base. This would be a challenge to the most experienced among us, and Bob's next piece will be even better, due to constructive critique and discussion. Bob, thanks for reminding us what the gallery is all about.



Rich Fitch
Maple vase



Editor's Choice



Bill Brown
Walnut

Andy Kuby
Maple tea light



Ken Staggs
House plant ornaments



Max Schoenberger
Flower vase, maple and mahogany



Jason Swanson
Hickory chest with peppermills



Monthly meetings are held on the 2nd Tuesday of each month from 7:00 pm till 9:30 pm

Woodcraft Supply

1280 E. Dundee Rd.
Palatine, IL
847-776-1184

Visit our website

chicagowoodturners.com
for more gallery photos, past newsletters, expanded calendar and late-breaking news.

Membership in the Chicago Woodturners is available to anyone wishing to increase their turning skills through education, discussion and critique. Annual dues are \$25.00 for a single membership and \$35.00 for a family. Visit our website for an application or contact

Andy Kuby

Membership Chairman

The Chicago Woodturners is a chapter of the American Association of Woodturners (AAW). Visit their website for more information.

www.woodturner.org

A Closer Look

Paul Shotola



Candle holder
Andy Kuby

The September gallery held an especially fine selection of turnings. As I stated at the meeting, the Chicago Woodturners have been known as a “bowl turning” club. Long-time members can attest to the gallery being primarily made up of bowls. Your presentations in September proved that there is more diversity these days. And diversity is a good thing. Woodturning is never boring because the lathe opens up so many avenues for expression. We’re not limited to bowls or candlesticks. Items and artwork both useful and whimsical can be produced on the lathe. For some of

us, the turned object is a jumping-off point, as seen in work by Binh Pho and Alan Carter. For some, the turned object is complete from the lathe, as Prestini and Stockdale showed in their ground-breaking work in the 1950s. For most of us, it’s a blend of the lathe and other techniques. Andy Kuby has combined a simply turned object into a clever and intriguing work of art with some carving and pyrography. The shape is simple, the carving unsophisticated, but the finished piece has a charm and sets a nice, woody tone. Well executed in its simplicity, Andy's tea light candle holder is worthy of a “Closer Look” and can provide inspiration to all of us to attempt something new.

“A Closer Look” is presented each month by the reviewer of the CWT gallery, celebrating originality and fine craftsmanship.

For Sale, Trade, or Free

Ring Master for Jet mini lathe, including clamp kit, 2 HSS double sided blades, instructional DVDs and a supply of bowl-sized Corian material. New cost over \$500, sell for \$375. Can deliver to the September meeting. Alice Call 630-761-0742.

Bed extension and leg for Jet 1642. \$175.00 Contact Dan Goulding jjdjou774@sbcglobal.net or 847-356-7817.

Drill Press, vintage Walker-Turner, 1/2” chuck, bench model. Contact Roger Basrak 847-358-2708

*To place an ad, contact Paul Shotola 847-412-9781, p.shotola@comcast.net
Non-commercial listings only, please.*

“For Sale” and “Wanted to Buy” listings will be posted on the CWT Website as well as the Newsletter