



Est. 1988

April, 2023

Vol. 35, Issue No. 4

Inside this issue:

Editor's Corner	2
President's Curls	3
March Minutes	4
Interactive Demo	5-7
Meet the Turner	14
The Inkwell	12-13
Segmenting	15
Last Cut	17
AAW News	19

Special points of interest:

- Roberto Ferrar's Solo Exhibition
- AAW Symposium 2023 Louisville, Kentucky
- 2023 Midwest Penturner's Gathering + Small Turnings (MPG+)
- Woodturning Cruise
- CWT Mentors
- CWT Woodturning Classes

CWT MEETING

Tuesday Apr 11, 2023

7 pm to 10 PM

In-Person Meeting /
Hybrid @ Christian Liberty



As the Wood Turns

Chicago Woodturners Newsletter

A chapter of the American Association of Woodturners

5 reasons to go to the AAW Symposium in Louisville

1. You need inspiration.
2. You want to meet the pro's in person.
3. You need new tools for the shop
4. You need to getaway from Chicago.
5. You crave non-stop woodturning action!

Get ready for
**Louisville
in 2023!**

The club discount is available until April 14!



Vendor area—2022 AAW Symposium Chattanooga

1890's Wood Lathe Restoration

When you find a wood lathe that dates back to 1890, what should you do with it?

Restore it of course!

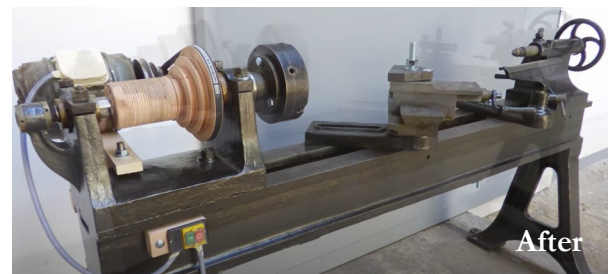
Check out this YouTube video where Olivier Gomis shows how he painstakingly disassembled every part and cleaned off the rust to restore this antique.

It is also updated with an electric motor!

The clip has French and English subtitles.



Before



After



YouTube link: <https://youtu.be/N2oJNiOVHuc>

Editor's Corner | *Phil Moy*



Phil Moy

First it was the Segmenting Symposium last year. That's where I won a Wedgie Sled in the raffle. Then there was the Segmented Woodturners club new member campaign in last month's issue. Of course, I joined because \$25 is such a great deal, as you should too! (*Page 13*) Slowly I'm being drawn into Al's segmenting world.

Al's March demonstration of a segmented martini glass from a flat board seals the commitment to do something segmented! (*See page 6 for the details!*)

Now I'm trying to decide between a JET bandsaw or a lathe duplicator to make a chess set. I am inspired by a Bobby Fischer chess set that I got last week. The set is a joy

to play with, the pieces are triple weighted. When you make a move, you can place the piece down with authority!



Bobby Fischer Ultimate Chess Pieces

It was \$60 in plastic, but I think it would be beautiful in maple and rosewood!

Anybody have a duplicator they want to part with?

I haven't forgotten about making pens. In this month's Inkwell I offer a brain dump on the things I have learned in my penmaking journey over the last two years! (*Pages 11 and 12*)

Phil



A new email for Letters to the Editor!

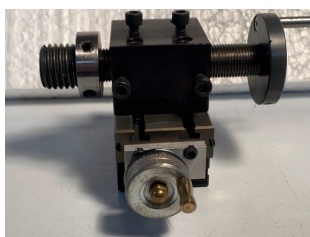
Letters to the Editor

Comments, complaints or ideas? *Send them to the Editor!*

There's a new email address for As The Wood Turns. I look forward to all of the new e-mails.

Email them to: editor@chicagowoodturners.com

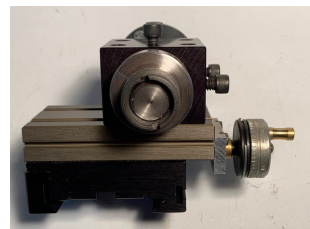
Bonnie Klein Threading jig



Back in 2002 I attended a Bonnie Klein demo. and enthusiastically purchased her threading jig. Long story short--- it's been on a shelf in the workshop for 20+ years, never used! My intention is to post it on Craig's List, then ebay. A thought came to me to contact your club first.

I've attached many photos to show the tool. I know your talented members know of Bonnie Klein, her lathe, and her threading jig and how to adapt it to any mini lathe. Since these are no longer available, I'm going out on the limb and ask for \$285. Happy to talk to anyone interested.

Ed Urban mortools@comcast.net



Appreciating Customer Service | *Mike Canfield*

I had an unexpected nice thing happen with Woodpecker Tools. I use their parting tool that has a replaceable cutting tip. Being too aggressive in parting off a project the tip dislodged and went lost in the wood shavings.

I ordered a replacement tip noting that an insertion tool was available that I had not received with my original tool. When my order arrived I received the replacement tip, the insertion tool and a complete new parting tool. I find this customer service to be above and beyond as the tool shipped to me was and \$89.99 value.





Est. 1988

President's Curls | *Rich Hall-Reppen*

April 11, 2023



Welcome to our new members and thanks for paying your 2023 dues to our existing members.

We want to thank Andy Kuby and Rich Nye for putting together our first Open Shop day at the Chicago School of

Woodworking. Upcoming Open Shop Days at CSW are the last Sunday of April and May from 9 am to 3pm.

It's a good opportunity to use the bigger Powermatic lathes to rough out some blanks or work on your tool technique on our full size Jet lathes. If you don't have any tools, we have tools you can try before you buy your own. Hope to see you at this or next month's Open Shop Day.

The Introductory Bowl Turning class is being held on Saturday April 15 at the Chicago School of Woodworking. Cost is \$60 and if you don't have any tools, we can help with that. You will leave the class with one or two bowls made by you! See Al Miotke if you haven't signed up yet.

Our Club has a busy month in April. In addition to our regular meeting on Tuesday April 11, we have the FOCUS on the Arts pen making event at Highland Park High School on April 19 and 20th and the next day the Midwest Pen Gathering happens on Friday and Saturday at the Hoffman Estates Marriot. And, then we finish the month with an Open Shop Day on April 30.

Brenda is looking for a few more volunteers for the FOCUS event. If you can't help for the full two days, let us know what days and time you

can help. I hear there is a great lunch for everybody who helps. The event runs from 9 am to 3:30 pm and we'll be making pens. Even if you haven't ever made a pen, you can help us work with the High School students to make their first pen (and, you might learn how to make your own pen).

Rich Nye is working on bringing in a professional demonstrator or two right after the AAW Symposium. Stay tuned for further details.

If you haven't registered yet for the AAW Symposium in Louisville held from June 1 to June 4, 2023, the club discount is still available until April 14, 2023. See Mark Jundanian or any of the Board members if you are interested.

Don't forget about the Open Shop Day at the Chicago School of Woodworking on Sunday April 30, 2023 from 9 am to 3 pm.


Thanks for everybody who is helping us with our program.

Rich



Rich at Stadium Blanks booth at MPG 2022

CWT MEETING
Tuesday April 11, 2023
Format: Hybrid
Join us In-person or by Zoom!



<https://us02web.zoom.us/j/85834156767>
Meeting ID: 858 3415 6767
Passcode: 051612

Interactive Demo by Keith Lackner
Instant Gallery Review by Rich Nye

As the Wood Turns is a monthly publication of the Chicago Woodturners, a Chapter of the American Association of Woodturners.

President, Rich Hall-Reppen
 Vice President, Rich Nye
 Treasurer, Mike Canfield
 Secretary, Frank Pagura
 Newsletter Editor, Phil Moy

Contributing Editors: Clint Stevens, Andy Kuby, Adam Didech, Marie Anderson
 Email: editor@chicagowoodturners.com
 Website: chicagowoodturners.com

March Minutes | *Frank Pagura*



AAW news

Mark Jundanian is collecting names of members willing to participate in the AAW offer for a club discount for registrations to the 2023 Louisville Symposium. We need 10 members to qualify, and he has already 11. Mark needs to turn in his list, by the 15th, so be sure to let him know if you are interested now. Mark will request your payment by check before the end of the month.

Roberto Ferrer will have a Free virtual demonstration which will be in Spanish, this will offer you the opportunity to learn how he makes his elaborate wall hangings with the benefit of brushing up on your Spanish. Check the AAW site to register, www.woodturner.org.

WIT news

Check on upcoming remote demonstrations on the AAW website.

Member News

Al Miotke and Andy Kuby announced that **CWT Turning 101** classes will take place at the Chicago School of woodworking on April 1, 2023. This is an all-day class on spindles and good turning practices. There are 9 full size lathes and several minis as well as mentors' assistance. The cost for the class is \$60. This class will be followed up by an all-day class on Bowl turning on April 15, 2023, the cost for this class is \$60. It is recommended that, if possible, you take both classes since you will benefit by the practice and instruction progression. Sign-up sheet is on the back table.

Andy would like to equip the classroom lathes with **Robust tool rests**, his experience with teaching classes has shown that many new turners find it easier to use these tool rests as opposed to what we have now. The board has approved this purchase. CWT members can also purchase a Robust tool rest with this purchase.

Andy also announced that a new **Open Shop time** is going to be set up at the Chicago School of Woodworking starting on the last Sunday of the month. We are going to try this for three months and then reevaluate. Members will have access to 9 full size lathes and many mini lathes for individual projects, as well as access to a good supply of turning tools. This test Open Shop is available at no cost to CWT members. See the sign-up sheet on the back or contact Andy to discuss details.

Focus on the Arts at the Highland Park HS will take place on April 17-19-20, 2023, see Brenda to sign up. Dave says he has 200 pen kits ready!

Mark Dreyer gave a brief report on the **Midwest Pen Gathering**. You have until the end of the month before registration fees increases. This sounds as though it's the greatest roster of demonstrators he has gathered.

Also, he announced that there is going to be **Pen Turning sessions** open to the public at the AAW Symposium where it will be possible to learn how to turn a pen. Mark needs some help with mentors and instructors and prepared pen blanks. If you can help see him after the meeting or give him a call.

Rich Hall-Reppen announced that the **Illinois State Fair** has a program where Hobbies and Crafts can be exhibited. The Fox Valley Woodworkers have been involved in this event. Rich will provide additional details and possibly a sign-up form with rules and regulations. The good part is that if you participate someone from Fox Valley will take your piece down to Springfield and bring it back. The Fair is in August.

Turn On Chicago

The tag team of Al and Kurt indicated that preparations are already well on the way. Met with the Crown Plaza and waiting for the contract to be processed. Working on August 1-4, 2024, for the

Symposium date. Kurt indicated that the committees are already well established but could use some additional help to make everyone’s job a little easier. This is a good opportunity to contribute your talents! The first organizational meeting is scheduled for April or May.

Beads of Courage

Andy will announce shortly the next delivery date, special thanks to Sol Anfuso for bringing in the latest batch of boxes to add to the inventory.

Pen for Troops

Dave announced he has received new pen kits, it’s matter of fact he has some with him right now see him if you can take some to your shop and bring back some completed pens.

Membership

Brenda announced that 40 members are in attendance tonight and 17 are on Zoom. We have 4 new members, added during this month and an old member returning.

Instant Gallery

The gallery table was well stocked tonight, Paul Pyrcik did a masterful job trying to fit everyone in.

Interactive Demonstration

The Martini Glass demonstration by Al Miotke followed. It is still amazing how much you can learn being up close to a master!

Dutifully submitted by **Frank Pagura**, Secretary



Safety Report | Frank Pagura

Tonight’s discussion was about the importance of using a face shield.

One of the possible reasons why someone would not use a face shield is the fact that the shield fogs up and wood dust accumulates quickly impairing vision. For this Frank showed a new anti-fog spray from KeySmart. The KeySmart FogBlock is a spray, which once applied to the lens keeps it clean and avoids static electricity from building up. Their package says there is no wiping, just spray on!

Great for safety glasses and all kinds of PPE equipment.
\$22.00 for 1 oz bottle on Amazon



Pair up your shield with a face mask! One of the best face masks is made by RZ Mask (rzmask.com). The M2 Mesh Mask comes with a F1 active carbon replaceable filter for efficient dust filtration, blocking 99.9% pf particulates down to .1 micron in size.

\$34.95 on their website. Comes in black, titanium, green, red, pink, sky blue and St. Patrick Green!



Rich Hall-Reppen related a personal recent occurrence with his face shield:

While attending the Niclot class, a week or so ago, I was working on my very small vessel and had a catch. The vessel left the chuck, flew right at my face! Without the face shield I would be showing you a nasty bruise or worse. The takeaway lesson here is even a small and light piece can be propelled fast enough to hurt you.

Frank Pagura, Chief Safety Officer

Editor’s note: Frank reports that these items are available at the ACE Hardware in Roselle as well as on Amazon and at Rockler. I went to the ACE Hardware in Lombard who did not carry it in the store, but found it in their online inventory, and could have it the next day.

Interactive Demonstration | *Clint Stevens*



A woodturner's work often reflects his or her background. For example, Al Miotke is an engineer. His creations definitely reflect that rich background. He shared all his experience and imagination with the Chicago Woodturners in the form of a turned segmented martini glass with a multi-axis stem. This is a complex project that Al made easy to understand. Yes, I know that it's not really a "glass" but a footed wooden bowl, but we will continue to call it a glass. You could say.....it's a martini with a twist.

Al's design begins with a $\frac{3}{4}$ inch board. The glass has three major elements, the cup, the stem and the base.

The cup is constructed from a technique called "bowl from a board." Beginning with a $\frac{3}{4}$ inch board, it is cut in half, trued up and tacked together with either hot glue or painters tape. Use a compass to make evenly spaced concentric circles. Al's example uses three concentric circles which yield four rings. The outside of the largest ring defines the rim of the glass. Separate the boards. They should now define four pairs of matched semicircles.



Editor's note: These two pictures were found online, they help to visualize the "bowl from a board" technique that Al used to create the martini glass

Use a bandsaw with the table set to 43 degrees to cut the semicircles at an angle. Glue the individual semicircles back together. Clean the glue joints on the smallest circle. Center and mount it (large face toward the headstock) onto a waste block. Drill a $\frac{1}{4}$ inch hole in the bottom of this smallest segment to serve as a centering reference and eventually to receive a tenon from the stem. True up the outside surface of the cone segment.



On a waste block, drill a $\frac{1}{4}$ inch hole and insert a dowel. Reverse the cone and support it with a series of wedges cut at 43 degrees. Hot glue can help. The segment should now turn true and serve as to align all the other circle segments. True up the inside of the cone then remove it from the waste block.



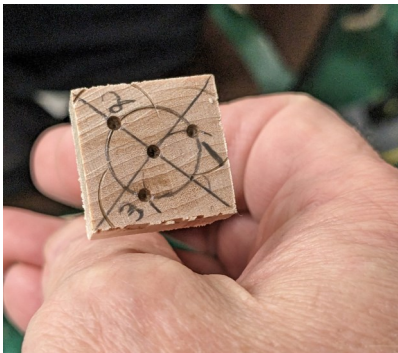
Clean all the glue joints and stack the circles segments so that they form a cone. Once satisfied that all segments are flat, the grain is aligned and there are no gaps, glue the segments together with an appropriate pca glue (i.e., Titebond Original) Forgetting to align the grain direction could lead to glue failure. A weight on top of it all provides clamping pressure.

Phil

Once the glue cures, the cone can be turned inside then outside. A waste block shaped similarly to the inside of the cup can serve as a jam chuck. Al uses a waste block attached to a nut with a $1\frac{3}{4}$ inch by 8 threads per inch. This clever trick allows the waste block to be

threaded directly onto the headstock. This allows the turner to true up the inside and outside of the cup.

The stem is three facets which make a 120 degree twist between one end and the other. The stem blank allows for the length of the stem, the tenons on both ends and a square of wood which will identify the four sets of centers, which will be marked shortly.



Mark the center of both sides of the stem blank by drawing straight lines from opposite corners. Use an awl or nail set to make the center easier to mount between centers accurately. This center will serve as the primary axis of the stem.

With a compass, draw a circle from the center with a diameter of about half the thickness of the blank. Repeat the process on the other end of the blank. Select a point where one leg of the "X" intersects the circle and rest the point of the compass there.

The compass should still be set to the radius of the circle. Draw an arc that intersects the circle on either side of the point the compass now rests on. The arc should pass directly through the center of the circle. The intersections of the circle and the arc, plus the point opposite the arc center now cuts the circle into three sections. Each mark is 120 degrees from each other.

Repeat the process on the opposite side of the blank. Mark the three points 1, 2 and 3. The other end will be laid out the same

way except the three matching center marks are offset 120 degrees either clockwise or counter clockwise depending on the desired direction of twist.

The stem is mounted between primary centers and are now ready to be roughed out. Al uses a spindle roughing gouge for this part. The prudent woodturner will make sure to wear safety goggles or face shield for this process. Al uses a sharp roughing gouge to bring the stem blank to just round. Leave enough wood at either end to allow for the tenons and support for the primary and three centers created on the circle.

Remount the blank along axis number 1 as is now identified on both ends. Rotate the blank to make sure that it will not hit the tool rest. Start the lathe at a dead stop, then bring it up to speed. Lightly make your first cuts. You will notice a flat that rotates 120 degrees from one end to the other. Repeat the process for centers 2 and 3.

You may have to use the same centers a couple of times to ensure that you have removed the same amount of wood from all sides. A shallow cove toward the center of the stem gives the piece an elegant look. Form $\frac{1}{4}$ inch tenons on both ends with a bedan or a wide parting too. A small pummel on both ends will add to the finished appeal of the stem. When finished, cut the stem free from the end supports with a pull saw.

The base is simply two pieces of wood glued together and turned to the desired shape. Al often uses waste blocks for this portion of the glass. Again, if the base has two or more segments, make sure that the grain alignment is the same for all segments. This helps insure the integrity of the glue joint.

When the base is turned and smooth, a $\frac{1}{4}$ inch hole is drilled to receive the tenon on one end of the stem. The underside of the base is turned on an appropriately sized waste block. Hot glue can be helpful for this process. If the finished base is reluctant to



release from the waste block, denatured alcohol can be useful. An eye dropper allows for a controlled amount of alcohol to be administered.

All three parts (cup, stem and base) can now be joined by the tenons on the stem.

Yes, Al Miotke is an Engineer. He is also a teacher, leader and very talented woodturner. Thanks for everything, Al.

Clint

ROBERTO FERRER

MEMORIES AND EXPERIENCES

Solo Exhibition | April 1 - 30, 2023



Wood Symphony Gallery is pleased to present Roberto Ferrer's solo exhibition featuring a spectacular collection of his incredible work. The pieces included in this exhibition are outstanding examples of Ferrer's unique style.

Born and raised in Mexico, Roberto Ferrer was surrounded by arts and crafts from an early age. While drawing and painting were part of his everyday life, the love for wood as a medium was born in his childhood when visiting his cousin's wood shop. But it was the Colonial and Baroque style architecture in his hometown that sparked the desire to one day create sculptural work. Ferrer's natural curiosity of knowing how things are built and how mechanisms work led him to explore different jobs, such as construction, auto mechanics, body shop work, and more. In his mid-20s, Roberto started carving sculptural bowls and vessels using a limited number of handheld power tools. Although the results were somewhere satisfactory, it was hard on his body and time consuming. And this is what eventually led Ferrer to pursue woodturning as a way of removing wood in a more efficient manner and to lay the base for the sculptural work he currently creates. Ferrer's work now is found in major private collections across the US and Europe.



**View Roberto's stunning collection at:
woodsymphony.com/roberto-ferrer-solo-exhibition**

Segmented Turning Class at CSW

Are you interested in learning more about segmented turning? Al Miotke is teaching a 2-day class that will take you thru all the steps in the process and each student will leave with a finished segmented bowl.

The class is taught thru the Chicago School of Woodworking on Saturday April 29 and May 6. Tuition: \$275, 9am to 4pm

You can register thru the school's website www.chicagowoodworking.com.



Open Shop Day at the CSW | *Andy Kuby*

Sunday March 26, 2023, was the first Chicago Woodturners Open Shop Day at the Chicago School of Woodworking, 5680 North Northwest Highway, Chicago, IL. We plan on making this a regular event on the last Sunday of every month if enough of our members are interested.

Today we had Jim Reynolds, Zhi Lu and Rich Hall-Reppen show up to turn. Derek Cadmus, Paul Shotola, Mark Jundanian, Pat Cogdal, Glenn Wisczorek and Marie Anderson stopped by to offer support, get a little mentoring or pick up the tool rests they ordered from the Club's bulk purchase with Robust.



Clint Stevens at CSW (2022)

All in all the day was a success and we hope that our attendance gets to the point where we turn people away. At the present time any member who wishes to take advantage of the free Open Shop and Mentoring opportunity needs to sign up in advance either with Brenda Miotke (bkmiotke@comcast.net) or Andy Kuby (studio@riverwoodturner.com). This is all your equipment, use it!

CWT Mentors

Want to speed up the learning process?

Let a CWT Mentor help you.

Leverage the wealth of woodturning knowledge at CWT!

Levels

B—Beginner

I—Intermediate

A—Advanced

Name	Town	Levels	Areas
Marie Anderson	Itasca	B, I, A	General turning, brainstorm with anyone
Dave Bertaud	Libertyville	B	General turning
John Dillon	Elburn	B	General turning
Tom Evoldi	Evanston	B	General turning, natural edge, thin wall, hollowing and carving
Reto Gallati	Chicago	B	General turning
Rich Hall-Reppen	Geneva	B, I	General turning
Andy Kuby	Riverwoods	B, I, A	General turning, spindles, bowls, platters, pens, multi-axis, ornaments, finials and other topics
Terry McCammon	Wilmette	B	General turning
Al Miotke	Mt. Prospect	B, I, A	General turning, segmenting
Phil Moy	Lombard	B	General turning, pens
Rich Nye	Batavia	B, I, A	General turning, carving, texturing, painting, burning
Frank Pagura	Elk Grove Village	B, I, A	General turning

CWT Woodturning 101 Classes

Class for New Turners

One of the benefits of being a member of CWT is the class that is held for new turners or those looking to hone their basic skills. The goal of the class is to jump start your progress as a woodturner by covering many basic techniques, proper use of the various tools, keeping your tools sharp, and most important lathe safety. This will be accomplished in a hands-on environment with multiple mentors guiding you thru the days projects.

The first class will focus on lathe basics and spindle turning. Being proficient with spindle turning is the cornerstone for all the other techniques you will learn. At the end of the day you will leave with a number of projects that you made during the day as you hone your skills

The second class will pick up where the spindle class ended and focus on how to use a 4- jaw chuck, making a proper tenon, bowl turning cutting techniques, and finishing the bottom. These same skills will enable you to proceed to platters, boxes, goblets and much more.

Each class is just \$60 and covers all the wood you will need. This is the best woodturning education opportunity you will find anywhere!. The day will begin at 9am and end by 4:00. Everyone who signs up will have their own full-size Lathe to work on. If you don't have the basic turning tools yet, no problem, they will be provided and we can discuss what are the best tools for you to purchase. The class meets at: the Chicago School of Woodworking (address below)

Spindle Turning, April 1 Bowl Turning, April 15

You can sign up or get more information by emailing Al Miotke at abmiotke@comcast.net. You can also sign up at the March meeting, but space is limited so register as soon as possible. You can pay at the March meeting with a check made out to Chicago Woodturners or mail the check to:

Al Miotke, 920 North Sumac Lane, Mount Prospect, Illinois 60056



Spindle Turning Class—April 1



The Chicago School of Woodworking was established in 2007 to train students in the art of furniture making. Since then, our program has expanded to include the arts of turning, scroll saw, marquetry, Chip Carving, speaker making and cabinet making.

We are committed to providing students the knowledge and skills to create functional and beautiful furniture that can be enjoyed for generations.

We have chosen machinery and tools that are safe, up-to-date, and well maintained, so students can focus on learning and enjoy the varied aspects of building a quality piece of furniture or crafting wood art.

Find out more about our offerings and class schedules on our website!



CHICAGO SCHOOL OF WOODWORKING

EDUCATING THE QUALITY MINDED HOBBYIST IN THE ART OF WOODWORKING

5680 N. Northwest Hwy, Chicago, IL 60646 | Phone: 773.275.1170

chicagowoodworking.com



The Inkwell
Chicago Woodturners

Penmaster's Choice | *Phil Moy*

As I began to do Spring Cleanup in the shop, I found different tools and other things that I hardly use anymore when making pens! I was going to do an article on what tools to buy first, but as I tried to do that, there are some things I would never buy. This article became a collection of thoughts on buying equipment to make pens, and what I ended up having.

So in this month's Inkwell, here are my choices for on best tools to have to make pens as well as some things learned along the way. There wasn't enough room to cover using acrylics and cast

1

Which lathe to get

This topic deserves an article by itself, but once you've decided to become a penmaker, here's a few things to think about.

The size of your pocketbook may be your decision maker. You'll hear it often from others, the lathe can the least expensive part of getting into woodturning.

The choices are a mini-lathe (\$200 to \$500), midi-lathe (\$600 to \$1200) or a full size lathe (\$3,000 plus). Choices in manufacturers, bundled packages and the store sales create a range of pricing.

Two other considerations, how much room you have for a shop and the size and length of future pieces you'll make will help you determine how big of a lathe to get.

The middle of the road choice is a midi-lathe, because it's hard to imagine only making pens.

Penmaster's Choice: JET 1221/VS



2

What kind of pens

Visit Rockler or Woodcraft to see the huge selection of pen kits. There are many online sources, but holding these things in hand is indispensable.

Penmaster's Choice: A single barrel pen, like the Bella Pen Kit.

A single barrel kit is a good beginning because it's as basic as you can get, minimal components, one barrel to turn. Get a half dozen kits of the same type.

You'll only need one set of bushings to match that kit.. Different kits require different sized bushings, different diameter drill bits and different tube lengths.

Want variety? Use different woods to create pens, maple, walnut, wenge, rosewood, zebrawood.

I got all kinds of kits in the beginning, and I have drill bits, and bushings I don't use.

Wood or Acrylic?

Roughly, blanks can be categorized as Wood or Acrylic.

The beauty and warmth of finished wood is what brings a lot of people to woodworking. Different wood blanks vary in cost, depending on where it is

sourced.

If you have wood at home, you can cut your own blanks.

It is possible to cut your own 5/8" x 5/8" strips. Store bought blanks are usually longer than you need and over time, you'll have a big collection of cutoffs

Penmaster's Choice: Wood

Drilling and turning acrylics requires a slightly different methodology, so starting with wood is a good place.

3

Prepare the blank

Table Saw vs Mitre saw?

If you are buying blanks, a mitre saw with a crosscut blade is all you need. A sharp blade is the most important!

A 10" mitre saw with a carbide tipped saw blade (60 tooth or higher) seems big for a pen blank, but has the room to cut and rip wood to make your own blanks.

The new sliding mitre saws are cool, but they didn't exist when I bought my saw

Penmaster's Choice: 10" Mitre Saw



blanks, that will have to be another issue of AWT!

If you are wondering if you should start making pens, I think the first question is how many pens will you end up making or perhaps if you get hooked on making pens (and spindles, and bowls, and ornaments and on and on!)

Yes, you're entitled to your own opinion, so write a Letter to the Editor, editor@chicagowoodturners.com for the next issue!

4

Drilling for the brass tube

For most pen kits, the brass tube is the spine of the pen. Having the correct diameter drill bit ensures a close fit with the tube and the drilled hole.

Using a drill press, brad tipped drills and a pen vise is one option. I found that as you make bigger diameter pens, you need a bigger drill bit, which usually is longer, and I hit the limit that my Harbor freight drill press could handle.



Penmaster's Choice: Brad tipped drill bits, center drill, Nova scroll chuck, pen jaws, Jacob's chuck

This is a big jump in cost, but I found the improvement in accuracy amazing. Fewer moving parts, predictable drilling results.

And if go beyond pens, a scroll chuck is great way to get into turning bowls!

Pre-drilled pen blanks?

I have to mention these blanks. For all the steps and tools used to reach the point of a glued tube in a trimmed blank, it was a joy to make some pens that already have the tube glued in. Many cast blanks come this way. But you do have to match your pen kit to the diameter of the tube.

Using a scroll chuck with pen jaws locks in the blank for more accurate drilling, and it doesn't matter how long a drill bit is (on a midi-lathe)

5

Glue and trim the ends

CA glue or Epoxy?

The speed at which CA glue sets up, especially with an accelerator would slant the decision to CA glue. But CA comes with toxic fumes that you can't avoid. If you are achieving tight fits between the tube and blank, CA is great. And don't forget to rough up the brass tube!

Penmaster's Choice: Epoxy

Thick or medium CA glue works fine, but 5 min epoxy is the most secure way to glue up a blank. You have to wait longer, but I've turned a number of pens where the bond popped on a CA glue job.

7

Turn the barrel

Basic mandrel or professional mandrel?

Penmaster's Choice: Professional mandrel and a mandrel saver

Carbide vs HSS gouges?

Carbide tipped gouges offer ease of use. HSS gouges also require sharpening, which means acquiring a grinder and appropriate wheels.

Penmaster's Choice: Carbide tipped gouges

8

Sand & Finish

120, 240, 320, 400, 600 grit packs are convenient!

Penmaster's Choice: Mesh sandpaper is a nice upgrade

Friction polish vs CA Glue?

Friction polish brings out the warmth of wood. CA glue does gives a beautiful glossy impervious finish. Proper ventilation will add a few years to your woodturning career.

Penmaster's Choice: Sanding sealer, Dr. Woodshop Pen Polish and Carnauba wax.

Proper sanding technique is key to a glossy finish on wood. It is important to sand parallel to the blank with each grit, or you'll have visible scratch marks, even after 600 grit.

6

Trimming the ends

Trimming the ends with an end mill provides a clean finish to the blank. Carbide tipped end mills last a lot longer. But there is a potential to be too aggressive on certain materials, trashing the end of your blank.

Penmaster's Choice: Disk Sander

After you done many blanks, you get to be pretty good at having minimal overhang, and a light touch is all you need to trim up the ends of the blank, A jig to keep the blank perpendicular to the disk a good aid.

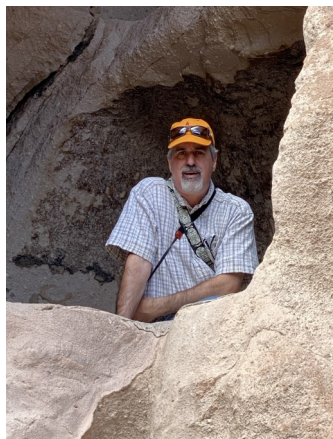
9

Assemble

Penmaster's Choice: Pen Assembly Press



Meet the Woodturner | *Todd Cohen*



When Todd was contemplating his retirement he knew he would need another hobby. Then COVID-19 hit and he really felt he needed something to do.

Todd liked woodworking and decided to take a turning class with

Clint Stevens and Graham McLachlan at the Chicago School of Woodworking. He took that class in January of 2021 and by May of 2021 several of our members encouraged Todd to join the club.

Todd doesn't have a lathe or workshop yet but finds time to use our lathes at the school. He said that woodworking and turning can be very solo activities, so working at CSW with people around makes it a bit less lonely.

He appreciates the help of the members of the Club and Shaun D. Todd really admires all the turners in our club but feels he is really learning a lot from Clint, Andy, Al, Marie and Graham.

When I asked Todd what he likes to make most his answer was "glue-ups" blaming Al Miotke for the answer. Todd does want to learn new skills like hollowing and true segmenting. He is also taking a lot of classes on flatworking.

Todd really enjoyed and learned a great deal at last summer's Turn On! Chicago symposium. He can't wait to go to his first AAW Symposium in June.

Todd retired from Abbott Labs in May of 2022, where he was Director of IT for over 28 years. Todd and his wife enjoy fishing, hiking and other outdoor activities which they do at their place in the Upper Peninsula of Michigan.

It was a great pleasure for me to Meet The Turner.



Brenda Miotke



Instant Gallery | *Paul Pyrcik*

Paul Pyrcik was the March Instant Gallery reviewer offering insightful reviews of the many turnings that were brought in for the March meeting. Check out the images on the CWT website!



**International
Association of
Penturners**



The Chicagoland Chapter of the International Association of Penmakers meets every third Saturday of the month, from 10:00 am to 1:00 pm at Woodcraft.

Join us, learn more about making custom pens and meet some of the best penmakers in Chicago!



7440 Woodward Avenue Suite, Woodridge, IL 60517

Finding Another Path on your Woodturning Journey



You have to wander through the Instant Gallery room and the Silent Auction Room at the 2022 Segmented Woodturner's Symposium to truly appreciate how segmented woodturners push the limits of woodturning.

You can be just a "brown & round" turner or you can explore the intricate, colorful world of segmented turning!

Your woodturning journey is not complete without trying

your hand at segmenting. But don't do it alone, join the Segmented Woodturners!

Al Miotke is the current president of the Segmented Woodturners, a Chapter of the AAW with 500 members.

To learn more about the organization or to join, contact Al Miotke (al@segmentedwoodturners.org) or visit the chapter website at segmentedwoodturners.org. Membership is \$25 a year.

Why join the Segmented Woodturners?

Membership to the Segmented Woodturners brings numerous benefits

- Opportunity to know hundreds of segmenters with skill levels from beginner to expert who are always willing to help you.
- A forum where you can ask questions and discuss best practices with the best international segmenters. You will be assured of getting quick responses. There is currently over a 10 year archive of discussions you can review.
- Ability to post photos and receive feedback and constructive comments to improve your skills
- An organized gallery archive with over 10 years of photos to inspire you.
- View a collection of member submitted jigs, fixtures, tips, and unique techniques to help you with the ability to add your own tip to help other members.
- View segmenting related woodturning videos.
- If you are looking to buy or sell a woodturning related item, view our classified ad section of the forum
- Post your latest project plans to share with members and view in an archive of plans submitted by members.
- Ability to upload plans from all segmenting CAD programs to share with other members.

- View member biographies to learn more about your fellow members
- Receive the Monthly Club Summary with the latest news in our chapter and the segmenting community.
- Participate in segmented turning exchanges between members.
- Participate in friendly club challenges where awards are given.
- Attend the annual chapter meeting at the AAW national symposium (open to the public)
- Attend our Segmented Woodturning Symposium (for a fee)

If you are serious about Segmented Woodturning and looking to improve your current skill level, this is the place to be.

Segmentedwoodturners.org is a 501 (c)(3) Organization and a chapter of: the American Association of Woodturners (AAW)





MPG+ Small Turning Expo | *Mark Dreyer*

The 2023 Midwest Penturners Gathering.

When:

April 21 and 22, 2023

Where:

Marriott Northwest, Hoffman Estates (consider staying on site, the days get long – and the rooms are going quick)

2 Full Days Of Turning – and this year we are adding some small turning projects and techniques. Learn from the best around:

Dick (and Cindy) Sing

John Underhill

Mark Dreyer

Ed Brown

Al Miotke

Linda Ferber

Marie Anderson

Fred Wissen

Tina Wissen

Rob Nelson

Bill Witt

And Many More Coming

Worth coming just for our line up of vendors and the vendor room.

Exotic Blanks

Easy Wood Tools

PenSmiths

PTownSubbie

Stadium Pen Blanks

Rich Coers

And Many More Coming

Details are still being worked out. \$59 for both days starting April 1. And if you know the MPG – you know we will have thousands in door prizes. You will not be disappointed.

Check the website for updated schedules, demonstrators and vendors.



For registration, visit midwestpenturnersgathering.com

Woodworking Cruise

**LAST MINUTE BOOKING
- FEW CABINS LEFT -
25% OFF
BOOK NOW!**



woodturningcruise.com

Norway

Dear subscriber,

You may have visited our website and read all the information about the upcoming Woodturning Cruise in June 2023. If not - please do so at: www.woodturningcruise.com

It is now only 80+ days until we sail, and we still have some available cabins for sale. Just now we had to make a major decision: to sail or not to. Our final decision was to sail, despite the fact that we had not filled all the cabins. We knew that many passengers had booked their flights, made arrangements months in advance and we could not disappoint all of these wonderful people who had already booked their cabins. But to fully finance the trip we need more passengers to fill the few remaining cabins. So we are doing something we don't normally do but presents a huge, rare opportunity:

Late booking discount!

Right now you can book a cabin with 25% discount as long as we have available cabins! Take advantage of this unique offer which probably never will happen again!

Visit our website and check out available cabins, the price has already been reduced! If you need more assistance or have questions:

Send an email to tobooking@woodturningcruise.com



Phil Moy

Last Cut | *Phil Moy*

I hadn't planned on such a long Inkwell column. There are so many ways to make a pen. I hope that it may trigger some members to write some of their experience or tips or disasters to share.

I probably could have broken it up into three issues, but then it would take three months for a new penmaker to make some good buying decisions.

I hope that maybe the article will help when looking at the vendor booths at the upcoming shows.

By the time I got to this point in the newsletter, I'm thinking that maybe I don't need to get that JET 10" bandsaw to make "bowls from a board". Isn't that what Open Shop at CSW is for? But the JET booth at MPG might make me change my mind.

And about the wedgie sled. Looking through Malcom Tibbett's Segmenting Book, I might

make a mitre saw wedgie sled. (He calls it a chop saw, by the way)

I also found some plans for making your own lathe duplicator. Has anyone used the PSI lathe duplicator? I don't know if I will ever make spindles, a 4 inch duplicator should be fine for chess pieces!

So many things I want to do and so little time!

I'm looking forward to MPG and AAW. Perhaps one of the best things about attending many events over time is that you meet people, make new friends and learn a lot, from demonstrators, fellow turners and vendors.

See you at the April CWT meeting or at MPG!

Phil

2023 WIT Virtual eXchange



2023 WIT eXchange Project Presentations
Saturday, April 29, 2023
 10:00 a.m. Eastern Time (UTC -04:00)
 4:00 p.m. Eastern Time (UTC -04:00)

The same content will be presented in both sessions--choose the time that works for you, wherever you are!

Registration opens April 15th!

The WIT eXchange connects our community of woodturning women through the challenging process of collaborative artistic expression. It stimulates creativity, facilitates self-confidence and fosters relationship building while sharing and learning from other participants.

The WIT Committee, building on the success of the past two years, will once again host a Virtual WIT eXchange. You can help make this the best event yet! We encourage all prior participants to reach out to their circle of WIT artist friends (in any media) to encourage participation in the 2023 Virtual WIT eXchange.

Introducing women from other media into this eXchange will open new avenues for creativity. At the same time, a new group of women will be introduced to the art of woodturning through a hands-on interactive exercise. The Virtual eXchange creates an environment which will expand awareness of woodturning beyond our current community, fostering infinite creative opportunities.

The WIT eXchange welcomes women of all skill levels. It is a collaborative project that will enhance skills, friendships, and self-confidence. It's designed to be hard work, but lots of FUN!

AAW Chapters in Illinois

Club	Contact	Website
Central Illinois Woodturners	Normal, IL	centralillinoiswoodturners.com
Chicago Woodturners	Arlington Heights, IL	chicagowoodturners.com
Flatland Woodturners	Champaign, IL	flatlandwoodturners.com
Lincoln Land Woodturners	Springfield, IL	llwonline.com
Northern Illinois Woodturners	Rockford, IL	northernillinoiswoodturners.com
Quad Cities Woodturners	Rock Island, IL	qcwoodturners.com
South Suburban Chiselers		
Illiana Woodturners	South Holland, IL	illianawoodturners.wordpress.com
Windy City Woodturners	Naperville, IL	windycitywoodturners.weebly.com



AAW's 37th Annual Symposium is the biggest woodturning event in the world and has something for everyone, no matter your experience level.

- **Learn from Top Turners** – More than 80 live demonstrations, presentations and panels by some of the best turners from around the world.
- **World's Largest Woodturning Trade Show** – Get an up-close look at the latest tools and supplies.
- **Connect** – Meet woodturning hobbyists, professionals, artists, collectors, and vendors.
- **Exhibitions and Gallery** – Get inspired by hundreds of unique pieces from all over the world.
- **Family Friendly** – Enjoy woodturning activities for kids and the whole family.
- **Experience Louisville** – The home of the Louisville Slugger, iconic bourbon, Kentucky Derby and more.



AAW is a nonprofit organization dedicated to advancing the art and craft of woodturning worldwide through education.

With more than 16,000 members and over 365 local chapters globally, AAW members include amateurs, hobbyists, professionals, gallery owners, collectors, tool and equipment suppliers, and others.

Join the AAW and have access to the largest portfolio of woodturning-related material in the world!

Hone your knowledge and skills using AAW's online learning portals, exclusive print and digital publications, curated educational videos, high-quality safety resources, and more.

Visit the American Association of Woodturners at woodturner.org



Est. 1988

35 years of craft, technology and tradition

Join us for our monthly meetings, all are welcome!

MEETING LOCATION

Christian Liberty Academy

502 W. Euclid Ave., Arlington Heights, IL. 60004.
6:30 pm Social Hour, 7:00 pm to 10:00 PM

Free parking! Enter South Door on East Side,
Chapel, 2nd floor, NE corner

Can't make it in person? Join us via Zoom!

<https://us02web.zoom.us/j/85834156767>

Meeting ID: 858 3415 6767

Passcode: 051612



2023 Calendar of Events

CWT Meetings

Jan 10	May 9	Sept 12
Feb 14	June 13	Oct 10
Mar 14	July 11	Nov 14
April 11	Aug 8	Dec 12

Events

Apr 1	CWT Spindle Turning Class	CSW, Chicago, IL
Apr 15	CWT Bowl Turning Class	CSW, Chicago, IL
April 17, 19-20	Focus on the Arts	Highland Park HS, Highland Park, IL
April 21 & 22	Midwest Pen Turner's Gathering	Marriott Northwest, Hoffman Estates, IL
May 4 -7	Chicago Pen Show	Marriott Northwest, Hoffman Estates, IL
June 1 to 4	AAW National Symposium	Louisville, KY

It is even more fun when you bring a friend!

Reasons to join Chicago Woodworkers

- Monthly meetings & newsletter
- Access to club member expertise and mentors
- Classes and hands-on sessions with name turners
- In-person demonstrations, product discounts, raffles
- and generally a good group to hang out with....

Membership Fees

- \$30 Individual membership
- \$40 Family membership.
- \$10 Under age of 25

Yearly membership fees for Chicago Woodturners are due at the beginning of the year. You can join at anytime of the year!

Pay with cash or a checks at the monthly meeting. (Make checks payable to 'Chicago Woodturners')

Application forms are found online! Contact Brenda Miotke for more information.

By email:
bkmiotke@comcast.net

Or by snail mail

Chicago Woodturners
c/o Brenda Miotke
920 North Sumac Lane
Mount Prospect, IL 60056



Est. 1988

*Join the movers
and shakers of
woodturning in
Chicago!*



Visit the Chicago Woodturners at
chicagowoodturners.com